

For Research Use Only

# NKG2E Recombinant monoclonal antibody, PBS Only

Catalog Number:87818-1-PBS



## Basic Information

|  |  |   |
|--|--|---|
| <b>Catalog Number:</b><br>87818-1-PBS      | <b>GenBank Accession Number:</b><br>NM_002261.3                                | <b>Purification Method:</b><br>Protein A purification |
| <b>Source:</b><br>Rabbit                   | <b>GeneID (NCBI):</b><br>3823  | <b>CloneNo.:</b><br>251269E10                         |
| <b>Isotype:</b><br>IgG                     | <b>UNIPROT ID:</b><br>Q07444-1   |   |
| <b>Immunogen Catalog Number:</b><br>EG4703 | <b>Full Name:</b><br>killer cell lectin-like receptor<br>subfamily C, member 3 |   |
|  | <b>Calculated MW:</b><br>37 kDa  |   |
|  | <b>Observed MW:</b><br>45-60 kDa   |   |

## Applications

**Tested Applications:**  
WB, Indirect ELISA

**Species Specificity:**  
human

## Background Information

NKG2E, also known as killer cell lectin-like receptor subfamily C member 3 (KLRC3), is a transmembrane protein primarily expressed on the surface of natural killer (NK) cells and some cytotoxic T-cells. As a member of the NKG2 family, it functions as a receptor for the recognition of non-classical MHC class I molecule HLA-E, playing a role in immune surveillance. Structurally, NKG2E is a type II membrane protein containing a C-type lectin domain in its extracellular region. The immunogenic sequence of NKG2E shares 88% homology with that of NKG2A, leading to cross-reactivity.

## Storage

**Storage:**  
Store at -80°C.  
**The product is shipped with ice packs. Upon receipt, store it immediately at -80°C**

**Storage Buffer:**  
PBS only, pH7.3

For technical support and original validation data for this product please contact:

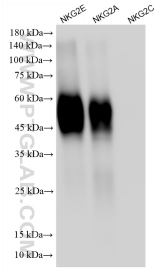
T: 4006900926

E: [Proteintech-CN@ptglab.com](mailto:Proteintech-CN@ptglab.com)

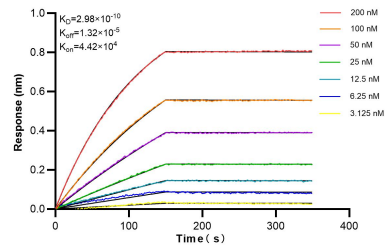
W: [ptgcn.com](http://ptgcn.com)

**This product is exclusively available under Proteintech Group brand and is not available to purchase from any other manufacturer.**

## Selected Validation Data



Recombinant protein were subjected to SDS PAGE followed by western blot with 87818-1-RR (NKG2E antibody) at dilution of 1:3000 incubated at room temperature for 1.5 hours. This data was developed using the same antibody clone with 87818-1-PBS in a different storage buffer formulation.



Biolayer interferometry (BLI) kinetic assays of 87818-1-RR against Human NKG2E were performed. The affinity constant is 0.298 nM.