

For Research Use Only

CHCHD10 Recombinant monoclonal antibody, PBS Only (Detector)

Catalog Number:87812-3-PBS



Basic Information

Catalog Number: 87812-3-PBS	GenBank Accession Number: BC065232	Purification Method: Protein A purification
Source: Rabbit	GeneID (NCBI): 400916	CloneNo.: 253308F4
Isotype: IgG	UNIPROT ID: Q8WYQ3	
Immunogen Catalog Number: AG22598	Full Name: coiled-coil-helix-coiled-coil-helix domain containing 10	
	Calculated MW: 14 kDa	
	Observed MW: 14-18 kDa	

Applications

Tested Applications:
WB, Cytometric bead array, Indirect ELISA

Species Specificity:
human, mouse, rat

Background Information

CHCHD10 is a mitochondrial protein that is enriched at cristae junctions in the intermembrane space and is likely involved in mitochondrial genome stability and maintenance of cristae junctions. Mutations in CHCHD10 have recently been described as a cause of frontotemporal dementia (FTD) comorbid with amyotrophic lateral sclerosis (ALS).

Storage

Storage:
Store at -80°C.
The product is shipped with ice packs. Upon receipt, store it immediately at -80°C

Storage Buffer:
PBS only, pH7.3

For technical support and original validation data for this product please contact:

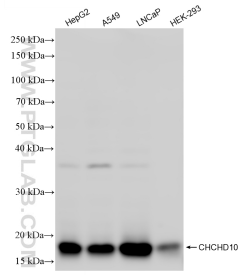
T: 4006900926

E: Proteintech-CN@ptglab.com

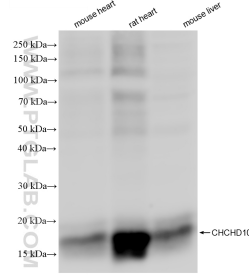
W: ptgcn.com

This product is exclusively available under Proteintech Group brand and is not available to purchase from any other manufacturer.

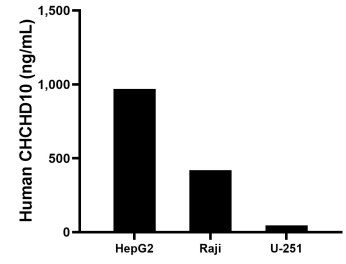
Selected Validation Data



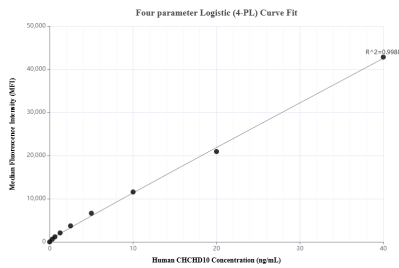
Various lysates were subjected to SDS PAGE followed by western blot with 87812-3-RR (CHCHD10 antibody) at dilution of 1:1000 incubated at room temperature for 1.5 hours. This data was developed using the same antibody clone with 87812-3-PBS in a different storage buffer formulation.



Various lysates were subjected to SDS PAGE followed by western blot with 87812-3-RR (CHCHD10 antibody) at dilution of 1:1000 incubated at room temperature for 1.5 hours. This data was developed using the same antibody clone with 87812-3-PBS in a different storage buffer formulation.



The mean CHCHD10 concentration was determined to be 969.5 ng/mL in HepG2 cell extract based on a 1.2 mg/mL extract load, 419.8 ng/mL in Raji cell extract based on a 1.2 mg/mL extract load, 46.1 ng/mL in U-251 cell extract based on a 1.4 mg/mL extract load.



Cytometric bead array standard curve of MP03220-1, CHCHD10 Recombinant Matched Antibody Pair, PBS Only. Capture antibody: 87812-2-PBS. Detection antibody: 87812-3-PBS. Standard: Ag22598. Range: 0.312-40 ng/mL.