

For Research Use Only

CHCHD10 Recombinant monoclonal antibody

Catalog Number: 87812-2-RR



Basic Information

Catalog Number:

87812-2-RR

Source:

Rabbit

Isotype:

IgG

Immunogen Catalog Number:

AG22598

GenBank Accession Number:

BC065232

GeneID (NCBI):

400916

UNIPROT ID:

Q8WYQ3

Full Name:

coiled-coil-helix-coiled-coil-helix domain containing 10

Calculated MW:

14 kDa

Observed MW:

14-18 kDa

Purification Method:

Protein A purification

CloneNo.:

253308E4

Recommended Dilutions:

WB: 1:2000-1:10000

IF/ICC: 1:250-1:1000

Applications

Tested Applications:

WB, IF/ICC, ELISA

Species Specificity:

human, mouse, rat

Positive Controls:

WB : LNCaP cells, HepG2 cells, mouse heart tissue, A549 cells, HEK-293 cells, rat heart tissue, mouse liver tissue

IF/ICC : HepG2 cells,

Background Information

CHCHD10 is a mitochondrial protein that is enriched at cristae junctions in the intermembrane space and is likely involved in mitochondrial genome stability and maintenance of cristae junctions. Mutations in CHCHD10 have recently been described as a cause of frontotemporal dementia (FTD) comorbid with amyotrophic lateral sclerosis (ALS).

Storage

Storage:

Store at -20°C. Stable for one year after shipment.

Storage Buffer:

PBS with 0.02% sodium azide and 50% glycerol, pH7.3

Aliquoting is unnecessary for -20°C storage

For technical support and original validation data for this product please contact:

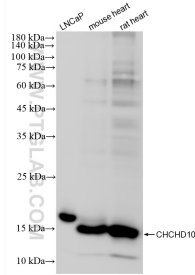
T: 4006900926

E: Proteintech-CN@ptglab.com

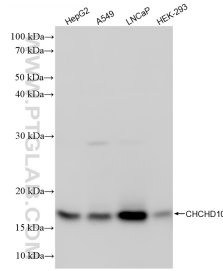
W: ptgcn.com

This product is exclusively available under Proteintech Group brand and is not available to purchase from any other manufacturer.

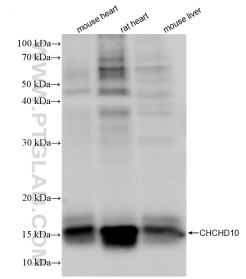
Selected Validation Data



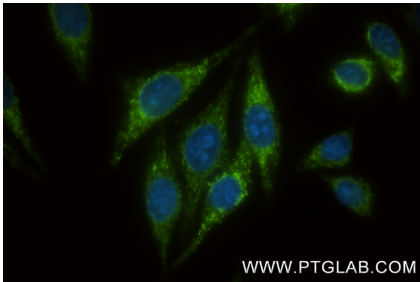
Various lysates were subjected to SDS PAGE followed by western blot with 87812-2-RR (CHCHD10 antibody) at dilution of 1:5000 incubated at room temperature for 1.5 hours.



Various lysates were subjected to SDS PAGE followed by western blot with 87812-2-RR (CHCHD10 antibody) at dilution of 1:5000 incubated at room temperature for 1.5 hours.



Various lysates were subjected to SDS PAGE followed by western blot with 87812-2-RR (CHCHD10 antibody) at dilution of 1:5000 incubated at room temperature for 1.5 hours.



Immunofluorescent analysis of (-20°C Methanol) fixed HepG2 cells using CHCHD10 antibody (87812-2-RR, Clone: 253308E4) at dilution of 1:500 and CoraLite®488-Conjugated Goat Anti-Rabbit IgG(H+L) (SA00013-2).