

For Research Use Only

PPP1R12B Recombinant monoclonal antibody

Catalog Number: 87808-1-RR



Basic Information

Catalog Number: 87808-1-RR	GenBank Accession Number: BC034430	Purification Method: Protein A purification
Source: Rabbit	GeneID (NCBI): 4660	CloneNo.: 253416D1
Isotype: IgG	UNIPROT ID: O60237	Recommended Dilutions: WB: 1:5000-1:50000 IF/ICC: 1:50-1:500
Immunogen Catalog Number: AG4185	Full Name: protein phosphatase 1, regulatory (inhibitor) subunit 12B	
	Calculated MW: 982 aa, 110 kDa	
	Observed MW: 110-130 kDa	

Applications

Tested Applications: WB, IF/ICC, ELISA	Positive Controls:
Species Specificity: human, mouse, rat	WB : mouse heart tissue, rat heart tissue, mouse skeletal muscle tissue, rat skeletal muscle tissue, mouse brain tissue, rat brain tissue
	IF/ICC : NIH/3T3 cells,

Background Information

PPP1R12B (MYPT2) is a critical regulatory subunit of protein phosphatase 1, primarily functioning in muscle tissues to control myosin phosphatase activity and calcium sensitivity of contraction. Its tissue-specific expression, particularly enrichment in heart and skeletal muscle, along with multiple alternatively spliced isoforms, enables specialized roles in different cellular contexts. The protein's ankyrin repeats and C-terminal kinase-interacting domain facilitate its function as a molecular scaffold that directs PP1 catalytic activity toward specific substrates.

Storage

Storage:
Store at -20°C. Stable for one year after shipment.
Storage Buffer:
PBS with 0.02% sodium azide and 50% glycerol, pH7.3
Aliquoting is unnecessary for -20°C storage

For technical support and original validation data for this product please contact:

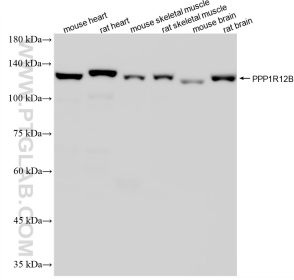
T: 4006900926

E: Proteintech-CN@ptglab.com

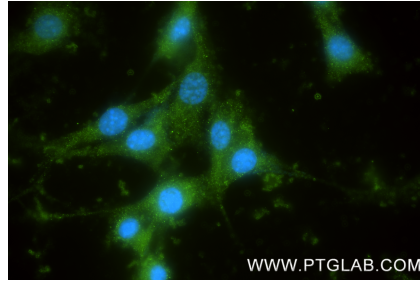
W: ptgcn.com

This product is exclusively available under Proteintech Group brand and is not available to purchase from any other manufacturer.

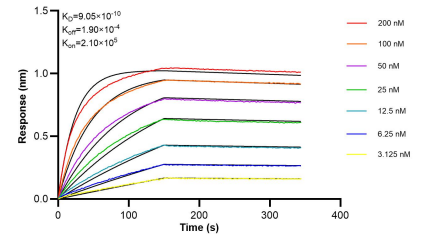
Selected Validation Data



Various lysates were subjected to SDS PAGE followed by western blot with 87808-1-RR (PPP1R12B antibody) at dilution of 1:10000 incubated at room temperature for 1.5 hours.



Immunofluorescent analysis of (-20°C Methanol) fixed NIH/3T3 cells using PPP1R12B antibody (87808-1-RR, Clone: 253416D1) at dilution of 1:200 and CoraLite® 488-Conjugated Goat Anti-Rabbit IgG(H+L) (SA00013-2).



Bi-layer interferometry (BLI) kinetic assays of 87808-1-RR against Human PPP1R12B were performed. The affinity constant is 0.905 nM.