

For Research Use Only

# PPM1K Recombinant monoclonal antibody

Catalog Number:87805-1-RR



## Basic Information

|   |  |   |
|---|--|---|
| <b>Catalog Number:</b><br>87805-1-RR        | <b>GenBank Accession Number:</b><br>BC037552                         | <b>Purification Method:</b><br>Protein A purification |
| <b>Source:</b><br>Rabbit                    | <b>GeneID (NCBI):</b><br>152926                                      | <b>CloneNo.:</b><br>253328G8                          |
| <b>Isotype:</b><br>IgG                      | <b>UNIPROT ID:</b><br>Q8N3J5   | <b>Recommended Dilutions:</b><br>WB: 1:1000-1:4000    |
| <b>Immunogen Catalog Number:</b><br>AG41706 | <b>Full Name:</b><br>protein phosphatase 1K (PP2C domain containing) |   |
|   | <b>Calculated MW:</b><br>41 kDa                                      |   |
|   | <b>Observed MW:</b><br>37-41 kDa                                     |   |

## Applications

|  |   |
|--|---|
| <b>Tested Applications:</b><br>WB, ELISA | <b>Positive Controls:</b><br>WB : human heart tissue, |
| <b>Species Specificity:</b><br>human     |   |

## Background Information

Protein phosphatase, Mg<sup>2+</sup>/Mn<sup>2+</sup> dependent 1K (PPM1K), is a member of the PPM family of Mn<sup>2+</sup>/Mg<sup>2+</sup>-dependent protein phosphatases. PPM1K, essential for cell survival and development, is targeted to the mitochondria where it plays a key role in regulation of the mitochondrial permeability transition pore. PPM1K is essential for the regulation and nutrient-induced activation of the branched-chain alpha-keto acid dehydrogenase complex (BCKD or BCKDC), which catalyzes the breakdown of branched-chain amino acids (BCAA).

## Storage

**Storage:**  
Store at -20°C. Stable for one year after shipment.  
**Storage Buffer:**  
PBS with 0.02% sodium azide and 50% glycerol, pH7.3  
Aliquoting is unnecessary for -20°C storage

For technical support and original validation data for this product please contact:

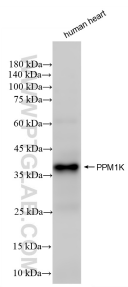
T: 4006900926

E: [Proteintech-CN@ptglab.com](mailto:Proteintech-CN@ptglab.com)

W: [ptgcn.com](http://ptgcn.com)

This product is exclusively available under Proteintech Group brand and is not available to purchase from any other manufacturer.

## Selected Validation Data



human heart tissue were subjected to SDS PAGE followed by western blot with 87805-1-RR (PPM1K antibody) at dilution of 1:2000 incubated at room temperature for 1.5 hours.