

For Research Use Only

PPM1K Recombinant monoclonal antibody, PBS Only

Catalog Number: 87805-1-PBS



Basic Information

Catalog Number: 87805-1-PBS	GenBank Accession Number: BC037552	Purification Method: Protein A purification
Source: Rabbit	GeneID (NCBI): 152926	CloneNo.: 253328G8
Isotype: IgG	UNIPROT ID: Q8N3J5	
Immunogen Catalog Number: AG41706	Full Name: protein phosphatase 1K (PP2C domain containing)	
	Calculated MW: 41 kDa	
	Observed MW: 37-41 kDa	

Applications

Tested Applications:
WB, Indirect ELISA

Species Specificity:
human

Background Information

Protein phosphatase, Mg²⁺/Mn²⁺ dependent 1K (PPM1K), is a member of the PPM family of Mn²⁺/Mg²⁺-dependent protein phosphatases. PPM1K, essential for cell survival and development, is targeted to the mitochondria where it plays a key role in regulation of the mitochondrial permeability transition pore. PPM1K is essential for the regulation and nutrient-induced activation of the branched-chain alpha-keto acid dehydrogenase complex (BCKD or BCKDC), which catalyzes the breakdown of branched-chain amino acids (BCAA).

Storage

Storage:
Store at -80°C.
The product is shipped with ice packs. Upon receipt, store it immediately at -80°C

Storage Buffer:
PBS only, pH7.3

For technical support and original validation data for this product please contact:

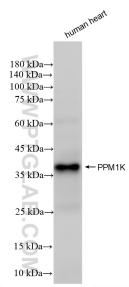
T: 4006900926

E: Proteintech-CN@ptglab.com

W: ptgcn.com

This product is exclusively available under Proteintech Group brand and is not available to purchase from any other manufacturer.

Selected Validation Data



human heart tissue were subjected to SDS PAGE followed by western blot with 87805-1-RR (PPM1K antibody) at dilution of 1:2000 incubated at room temperature for 1.5 hours. This data was developed using the same antibody clone with 87805-1-PBS in a different storage buffer formulation.