

For Research Use Only

# C1QL2 Recombinant monoclonal antibody

Catalog Number: 87797-1-RR



## Basic Information

<b>Catalog Number:</b> 87797-1-RR	<b>GenBank Accession Number:</b> NM_182528	<b>Purification Method:</b> Protein A purification
<b>Source:</b> Rabbit	<b>GeneID (NCBI):</b> 165257	<b>CloneNo.:</b> 253329D5
<b>Isotype:</b> IgG	<b>UNIPROT ID:</b> Q7Z5L3	<b>Recommended Dilutions:</b> WB: 1:2000-1:10000 IF/ICC: 1:200-1:800
<b>Immunogen Catalog Number:</b> AG37614	<b>Full Name:</b> complement component 1, q subcomponent-like 2	
	<b>Calculated MW:</b> 29 kDa	
	<b>Observed MW:</b> 35 kDa	

## Applications

<b>Tested Applications:</b> WB, IF/ICC, ELISA	<b>Positive Controls:</b>
<b>Species Specificity:</b> human, mouse, rat, pig	<b>WB :</b> HeLa cells, HEK-293 cells, mouse brain tissue, rat brain tissue, pig brain tissue
	<b>IF/ICC :</b> HeLa cells,

## Background Information

Complement C1q-like protein 2 (C1QL2, also known as CTRP10) is a member of the C1q-like protein family. It is a secreted protein that plays a role in synaptic organization and function. C1QL2 is involved in the formation and maintenance of synapses, particularly in the central nervous system (CNS) (PMID: 20646056). It interacts with specific neuexin-3 isoforms to recruit synaptic vesicles and modulate synaptic transmission. Additionally, C1QL2 has been implicated in the regulation of hippocampal mossy fiber-CA3 synapse function, suggesting its role in synaptic plasticity and memory formation (PMID: 28219683).

## Storage

**Storage:**  
Store at -20°C. Stable for one year after shipment.

**Storage Buffer:**  
PBS with 0.02% sodium azide and 50% glycerol, pH7.3

Aliquoting is unnecessary for -20°C storage

For technical support and original validation data for this product please contact:

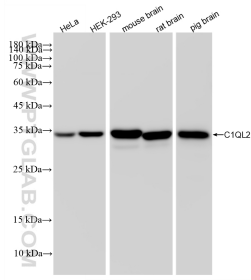
T: 4006900926

E: [Proteintech-CN@ptglab.com](mailto:Proteintech-CN@ptglab.com)

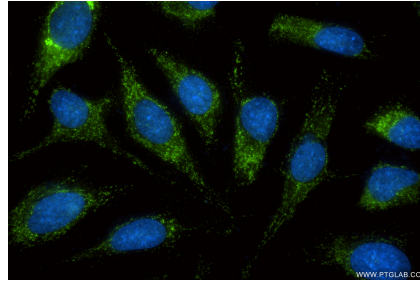
W: [ptgcn.com](http://ptgcn.com)

**This product is exclusively available under Proteintech Group brand and is not available to purchase from any other manufacturer.**

## Selected Validation Data



Various lysates were subjected to SDS PAGE followed by western blot with 87797-1-RR (C1QL2 antibody) at dilution of 1:5000 incubated at room temperature for 1.5 hours.



Immunofluorescent analysis of (-20°C Methanol) fixed HeLa cells using C1QL2 antibody (87797-1-RR, Clone: 253329D5) at dilution of 1:400 and CoraLite® 488-Conjugated Goat Anti-Rabbit IgG(H+L) (SA00013-2).