

For Research Use Only

SDHB Recombinant monoclonal antibody

Catalog Number:87791-1-RR



Basic Information

Catalog Number: 87791-1-RR	GenBank Accession Number: BC007840	Purification Method: Protein A purification
Source: Rabbit	GeneID (NCBI): 6390	CloneNo.: 253361D1
Isotype: IgG	UNIPROT ID: P21912	Recommended Dilutions: WB: 1:1000-1:6000 IHC: 1:500-1:2000
Immunogen Catalog Number: AG0968	Full Name: succinate dehydrogenase complex, subunit B, iron sulfur (Ip)	
	Calculated MW: 32 kDa	
	Observed MW: 28-32 kDa	

Applications

Tested Applications:

WB, IHC, ELISA

Species Specificity:

human, mouse, rat

Note-IHC: suggested antigen retrieval with TE buffer pH 9.0; (*) Alternatively, antigen retrieval may be performed with citrate buffer pH 6.0

Positive Controls:

WB : HepG2 cells, HSC-T6 cells, HeLa cells, HEK-293 cells, K-562 cells, NIH/3T3 cells, Neuro-2a cells

IHC : human kidney tissue,

Background Information

SDHB(Succinate dehydrogenase [ubiquinone] iron-sulfur subunit, mitochondrial) is also named as SDH, SDH1 and belongs to the succinate dehydrogenase/fumarate reductase iron-sulfur protein family. The SDHD, SDHB, and SDHC genes encode subunits of mitochondrial complex II (succinate dehydrogenase). Mitochondrial complex II is a heterotetrameric complex involved in the aerobic electron transport chain and catalyses the oxidation of succinate to fumarate (Krebs cycle) with transport of electrons to the ubiquinone pool. SDHA and SDHB are the hydrophilic catalytic part of the complex and are highly conserved(J Med Genet 2004;41:e99). Defects in SDHB are a cause of susceptibility to pheochromocytoma (PCC), paragangliomas type 4 (PGL4), paraganglioma and gastric stromal sarcoma (PGGS) and Cowden-like syndrome (CWDLS).

Storage

Storage:

Store at -20°C. Stable for one year after shipment.

Storage Buffer:

PBS with 0.02% sodium azide and 50% glycerol, pH7.3

Aliquoting is unnecessary for -20°C storage

For technical support and original validation data for this product please contact:

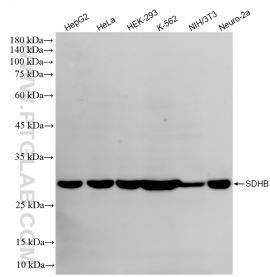
T: 4006900926

E: Proteintech-CN@ptglab.com

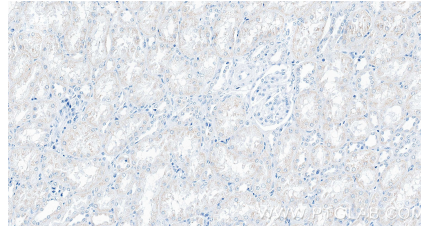
W: ptgcn.com

This product is exclusively available under Proteintech Group brand and is not available to purchase from any other manufacturer.

Selected Validation Data



Various lysates were subjected to SDS PAGE followed by western blot with 87791-1-RR (SDHB antibody) at dilution of 1:3000 incubated at room temperature for 1.5 hours.



Immunohistochemical analysis of paraffin-embedded human kidney tissue slide using 87791-1-RR (SDHB antibody) at dilution of 1:1000 (under 40x lens). Heat mediated antigen retrieval with Tris-EDTA buffer (pH 9.0).