

For Research Use Only

EDEM1 Recombinant monoclonal antibody, PBS Only (Capture)

Catalog Number: 87789-1-PBS



Basic Information

Catalog Number: 87789-1-PBS	GenBank Accession Number: BC019088	Purification Method: Protein A purification
Source: Rabbit	GeneID (NCBI): 9695	CloneNo.: 253376D2
Isotype: IgG	UNIPROT ID: Q92611	
Immunogen Catalog Number: AG41790	Full Name: ER degradation enhancer, mannosidase alpha-like 1	
	Calculated MW: 74 kDa	
	Observed MW: 75 kDa	

Applications

Tested Applications:
WB, Cytometric bead array, Indirect ELISA

Species Specificity:
human, mouse

Background Information

Storage

Storage:
Store at -80°C.
The product is shipped with ice packs. Upon receipt, store it immediately at -80°C

Storage Buffer:
PBS only, pH7.3

For technical support and original validation data for this product please contact:

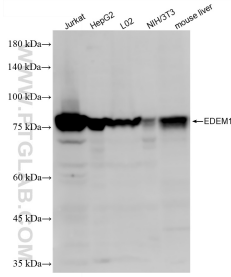
T: 4006900926

E: Proteintech-CN@ptglab.com

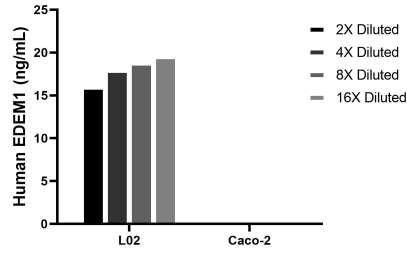
W: ptgcn.com

This product is exclusively available under Proteintech Group brand and is not available to purchase from any other manufacturer.

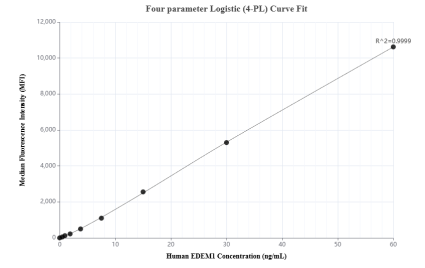
Selected Validation Data



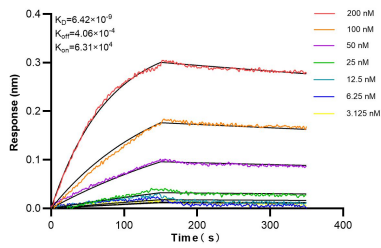
Various lysates were subjected to SDS PAGE followed by western blot with 87789-1-RR (EDEM1 antibody) at dilution of 1:2000 incubated at room temperature for 1.5 hours. This data was developed using the same antibody clone with 87789-1-PBS in a different storage buffer formulation.



The mean EDEM1 concentration was determined to be 18.0 ng/mL in LO2 cell extract based on a 1.2 mg/mL extract load, Caco-2 cell extract were served as a negative control.



Cytometric bead array standard curve of MP03204-1, EDEM1 Recombinant Matched Antibody Pair, PBS Only. Capture antibody: 87789-1-PBS. Detection antibody: 87789-2-PBS. Standard: Ag41790. Range: 0.469-60 ng/mL.



Biolayer interferometry (BLI) kinetic assays of 87789-1-RR against Human EDEM1 were performed. The affinity constant is 6.42 nM.