

For Research Use Only

CEP250/CNAP1 Recombinant monoclonal antibody

Catalog Number:87777-1-RR



Basic Information

Catalog Number:

87777-1-RR

Source:

Rabbit

Isotype:

IgG

Immunogen Catalog Number:

AG0394

GenBank Accession Number:

BC001433

GeneID (NCBI):

11190

UNIPROT ID:

Q9BV73

Full Name:

centrosomal protein 250kDa

Calculated MW:

281 kDa

Observed MW:

250-280 kDa

Purification Method:

Protein A purification

CloneNo.:

253334H2

Recommended Dilutions:

WB: 1:5000-1:50000

Applications

Tested Applications:

WB, ELISA

Species Specificity:

human

Positive Controls:

WB : HEK-293T cells, LNCaP cells, HEL cells, HeLa cells, A431 cells

Background Information

CEP250, also known as C-Nap1, is a 250 kDa coiled-coil protein that localizes to the proximal ends of mother and daughter centrioles. It is required for centriole-centriole cohesion during interphase of the cell cycle. It dissociates from the centrosomes when parental centrioles separate at the beginning of mitosis. The protein associates with and is phosphorylated by NIMA-related kinase 2, which is also associated with the centrosome.

Storage

Storage:

Store at -20°C. Stable for one year after shipment.

Storage Buffer:

PBS with 0.02% sodium azide and 50% glycerol, pH7.3

Aliquoting is unnecessary for -20°C storage

For technical support and original validation data for this product please contact:

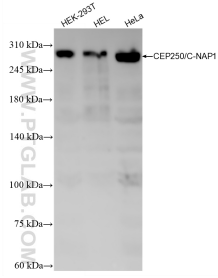
T: 4006900926

E: Proteintech-CN@ptglab.com

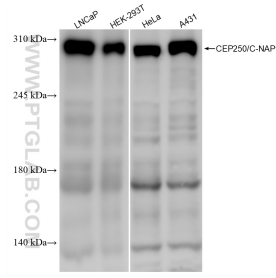
W: ptgcn.com

This product is exclusively available under Proteintech Group brand and is not available to purchase from any other manufacturer.

Selected Validation Data



Various lysates were subjected to SDS PAGE followed by western blot with 87777-1-RR (CEP250/CNAP1 antibody) at dilution of 1:10000 incubated at room temperature for 1.5 hours.



Various lysates were subjected to SDS PAGE followed by western blot with 87777-1-RR (CEP250/CNAP1 antibody) at dilution of 1:5000 incubated at room temperature for 1.5 hours.