

For Research Use Only

# MAN2A1 Recombinant monoclonal antibody, PBS Only (Detector)

Catalog Number:87763-1-PBS



## Basic Information

<b>Catalog Number:</b> 87763-1-PBS	<b>GenBank Accession Number:</b> BC142656	<b>Purification Method:</b> Protein A purification
<b>Source:</b> Rabbit	<b>GeneID (NCBI):</b> 4124	<b>CloneNo.:</b> 253254B2
<b>Isotype:</b> IgG	<b>UNIPROT ID:</b> Q16706	
<b>Immunogen Catalog Number:</b> AG15536	<b>Full Name:</b> mannosidase, alpha, class 2A, member 1	
	<b>Calculated MW:</b> 1144 aa, 131 kDa	

## Applications

**Tested Applications:**  
Cytometric bead array, Indirect ELISA

**Species Specificity:**  
human

## Background Information

### Storage

**Storage:**  
Store at -80°C.  
**The product is shipped with ice packs. Upon receipt, store it immediately at -80°C**

**Storage Buffer:**  
PBS only, pH7.3

For technical support and original validation data for this product please contact:

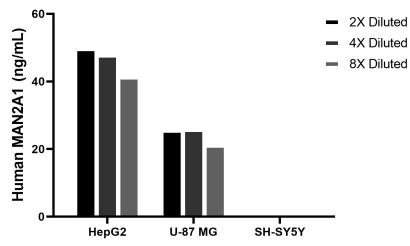
T: 4006900926

E: [Proteintech-CN@ptglab.com](mailto:Proteintech-CN@ptglab.com)

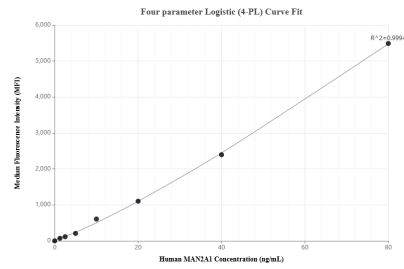
W: [ptgcn.com](http://ptgcn.com)

**This product is exclusively available under Proteintech Group brand and is not available to purchase from any other manufacturer.**

## Selected Validation Data



The mean MAN2A1 concentration was determined to be 46.2 ng/mL in HepG2 cell extract based on a 1.2 mg/mL extract load, 24.1 ng/mL in U-87 MG cell extract based on a 1.2 mg/mL extract load, SH-SY5Y cell extract were served as a negative control.



Cytometric bead array standard curve of MP03195-1, MAN2A1 Recombinant Matched Antibody Pair, PBS Only. Capture antibody: 87763-2-PBS. Detection antibody: 87763-1-PBS. Standard: Ag15536. Range: 1.25-80 ng/mL.