

For Research Use Only

Mouse CD232/PLXNC1 Recombinant monoclonal antibody, PBS Only

Catalog Number:87759-2-PBS



Basic Information

Catalog Number: 87759-2-PBS	GenBank Accession Number: NM_018797.3	Purification Method: Protein A purification
Source: Rabbit	GeneID (NCBI): 54712	CloneNo.: 252223D4
Isotype: IgG	UNIPROT ID: Q9QZC2	
Immunogen Catalog Number: EG6304	Full Name: plexin C1	
	Calculated MW: 176 kDa	
	Observed MW: 220 kDa	

Applications

Tested Applications:
WB, IHC, Indirect ELISA

Species Specificity:
mouse

Background Information

PlxnC1 in mouse encodes a semaphorin receptor that integrates extracellular guidance and immune cues through R-Ras/Rap1-GTPase regulation. Expressed in neurons, epithelial cells, and immune cells, it governs axon targeting, olfactory circuit formation, and inflammatory responses. Loss of PlxnC1 disrupts olfactory axon sorting and modifies immune signaling, underscoring its conserved role in neurodevelopmental patterning and immune homeostasis.

Storage

Storage:
Store at -80°C.
The product is shipped with ice packs. Upon receipt, store it immediately at -80°C

Storage Buffer:
PBS only, pH7.3

For technical support and original validation data for this product please contact:

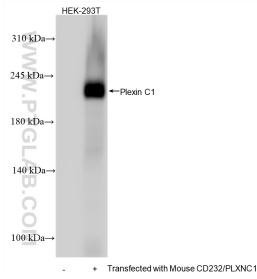
T: 4006900926

E: Proteintech-CN@ptglab.com

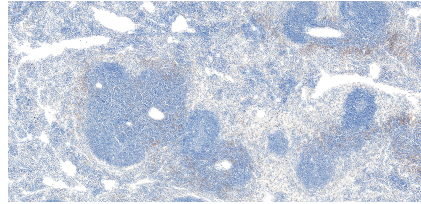
W: ptgcn.com

This product is exclusively available under Proteintech Group brand and is not available to purchase from any other manufacturer.

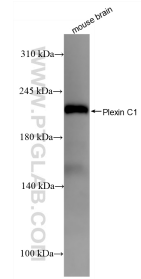
Selected Validation Data



Various lysates were subjected to SDS PAGE followed by western blot with 87759-2-RR (CD232/PLXNC1 antibody) at dilution of 1:5000 incubated at room temperature for 1.5 hours. This data was developed using the same antibody clone with 87759-2-PBS in a different storage buffer formulation.



Immunohistochemical analysis of paraffin-embedded mouse spleen tissue slide using 87759-2-RR (CD232/PLXNC1 antibody) at dilution of 1:1000 (under 10x lens). Heat mediated antigen retrieval with Tris-EDTA buffer (pH 9.0). This data was developed using the same antibody clone with 87759-2-PBS in a different storage buffer formulation.



Various lysates were subjected to SDS PAGE followed by western blot with 87759-2-RR (CD232/PLXNC1 antibody) at dilution of 1:5000 incubated at room temperature for 1.5 hours. This data was developed using the same antibody clone with 87759-2-PBS in a different storage buffer formulation.