

For Research Use Only

SLC22A3 Recombinant monoclonal antibody

Catalog Number: 87757-1-RR



Basic Information

Catalog Number:

87757-1-RR

Source:

Rabbit

Isotype:

IgG

GenBank Accession Number:

NM_021977

GeneID (NCBI):

6581

UNIPROT ID:

O75751

Full Name:

solute carrier family 22
(extraneuronal monoamine
transporter), member 3

Calculated MW:

61KD

Observed MW:

61 kDa

Purification Method:

Protein A purification

CloneNo.:

253195B7

Recommended Dilutions:

WB: 1:500-1:2000

Applications

Tested Applications:

WB, ELISA

Species Specificity:

human, mouse

Positive Controls:

WB: mouse kidney tissue, human kidney tissue

Background Information

Solute carrier family 22 member 3 (SLC22A3) is also named Extraneuronal monoamine transporter (EMT) and Organic cation transporter 3 (OCT3). It belongs to the SLC22 transporter family. SLC22A3 is a high-capacity, low-affinity transporter for the neurotransmitters norepinephrine, epinephrine, dopamine, serotonin, and histamine. SLC22A3 plays important roles in interorgan and interorganism small-molecule communication, and also regulates local and overall homeostasis in the body (PMID: 37626799). OCT3 is more widely expressed than OCT1 and OCT2. OCT3 expression is widespread and can be found in the skeletal muscle, heart, brain, placenta, cornea, retina, iris, liver, kidney, and vascular endothelial cells (PMID: 29309257, PMID: 2169772).

Storage

Storage:

Store at -20°C. Stable for one year after shipment.

Storage Buffer:

PBS with 0.02% sodium azide and 50% glycerol, pH7.3

Aliquoting is unnecessary for -20°C storage

For technical support and original validation data for this product please contact:

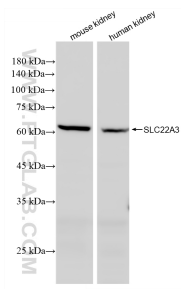
T: 4006900926

E: Proteintech-CN@ptglab.com

W: ptgcn.com

This product is exclusively available under Proteintech Group brand and is not available to purchase from any other manufacturer.

Selected Validation Data



Various lysates were subjected to SDS PAGE followed by western blot with 87757-1-RR (SLC22A3 antibody) at dilution of 1:1000 incubated at room temperature for 1.5 hours.