

For Research Use Only

PSG1 Recombinant monoclonal antibody, PBS Only (Capture)

Catalog Number:87751-3-PBS



Basic Information

Catalog Number: 87751-3-PBS	GenBank Accession Number: BC058285	Purification Method: Protein A purification
Source: Rabbit	GeneID (NCBI): 5669	CloneNo.: 253347A8
Isotype: IgG	UNIPROT ID: P11464	
Immunogen Catalog Number: EG3704	Full Name: pregnancy specific beta-1-glycoprotein 1	
	Calculated MW: 48 kDa	

Applications

Tested Applications:
Sandwich ELISA, Indirect ELISA

Species Specificity:
human

Background Information

Storage

Storage:
Store at -80°C.
The product is shipped with ice packs. Upon receipt, store it immediately at -80°C

Storage Buffer:
PBS only, pH7.3

For technical support and original validation data for this product please contact:

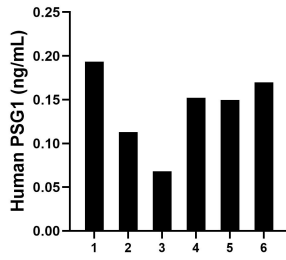
T: 4006900926

E: Proteintech-CN@ptglab.com

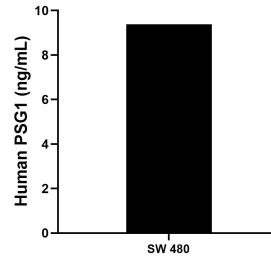
W: ptgcn.com

This product is exclusively available under Proteintech Group brand and is not available to purchase from any other manufacturer.

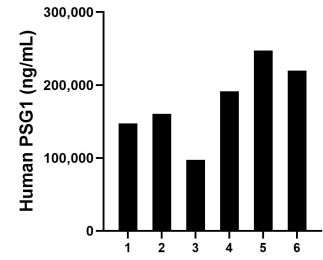
Selected Validation Data



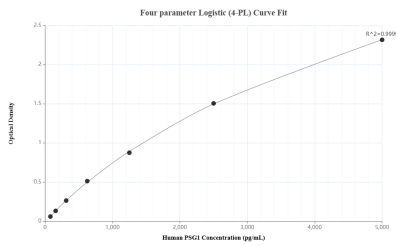
Plasma of six individual healthy human donors was measured. The human PSG1 concentration of detected samples was determined to be 0.14 ng/mL with a range of 0.11 - 0.19 ng/mL.



SW 480 cells were cultured in RPMI 1640 supplemented with 10% fetal bovine serum, 2 mM L-glutamine, 100 U/mL penicillin, and 100 µg/mL streptomycin sulfate. An aliquot of the culture supernatants were removed, assayed for levels of human PSG1, and measured 9.38 ng/mL.



Plasma of six maternity donors was measured. The human PSG1 concentration of detected samples was determined to be 177,237.82 ng/mL with a range of 97,423.16- 247,176.92 ng/mL.



Sandwich ELISA standard curve of MP03180-2, Human PSG1 Recombinant Matched Antibody Pair - PBS only. 87751-3-PBS was coated to a plate as the capture antibody and incubated with serial dilutions of standard Eg3704. 87751-1-PBS was HRP conjugated as the detection antibody. Range: 78.1-5000 pg/mL