

For Research Use Only

# PSG1 Recombinant monoclonal antibody, PBS Only (Capture)

Catalog Number:87751-2-PBS



## Basic Information

|  |   |   |
|--|---|---|
| <b>Catalog Number:</b><br>87751-2-PBS      | <b>GenBank Accession Number:</b><br>BC058285                  | <b>Purification Method:</b><br>Protein A purification |
| <b>Source:</b><br>Rabbit                   | <b>GeneID (NCBI):</b><br>5669                                 | <b>CloneNo.:</b><br>253347B6                          |
| <b>Isotype:</b><br>IgG                     | <b>UNIPROT ID:</b><br>P11464                                  |   |
| <b>Immunogen Catalog Number:</b><br>EG3704 | <b>Full Name:</b><br>pregnancy specific beta-1-glycoprotein 1 |   |

## Applications

**Tested Applications:**  
Cytometric bead array, Indirect ELISA

**Species Specificity:**  
human

## Background Information

### Storage

**Storage:**  
Store at -80°C.  
**The product is shipped with ice packs. Upon receipt, store it immediately at -80°C**

**Storage Buffer:**  
PBS only, pH7.3

For technical support and original validation data for this product please contact:

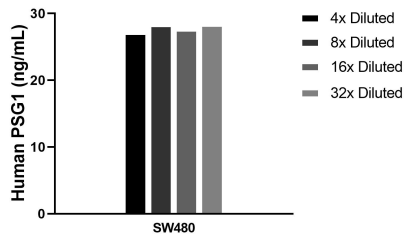
T: 4006900926

E: [Proteintech-CN@ptglab.com](mailto:Proteintech-CN@ptglab.com)

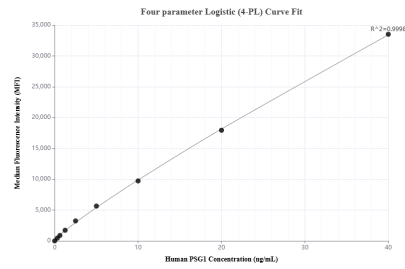
W: [ptgcn.com](http://ptgcn.com)

**This product is exclusively available under Proteintech Group brand and is not available to purchase from any other manufacturer.**

## Selected Validation Data



SW480 were cultured in DMEM supplemented with 10% fetal bovine serum, 2.5 mM L-glutamine, 100 U/mL penicillin, and 100 ug/mL streptomycin sulfate. An aliquot of the cell culture supernatants was removed, assayed for human PSG1, and measured 27.8 ng/mL.



Cytometric bead array standard curve of MP03180-1, PSG1 Recombinant Matched Antibody Pair, PBS Only. Capture antibody: 87751-2-PBS. Detection antibody: 87751-1-PBS. Standard: Eg3704. Range: 0.312-40 ng/mL.