

For Research Use Only

# PSG1 Recombinant monoclonal antibody, PBS Only (Detector)

Catalog Number:87751-1-PBS



## Basic Information

Catalog Number: 87751-1-PBS	GenBank Accession Number: BC058285	Purification Method: Protein A purification
Source: Rabbit	GeneID (NCBI): 5669	CloneNo.: 253347D11
Isotype: IgG	UNIPROT ID: P11464	
Immunogen Catalog Number: EG3704	Full Name: pregnancy specific beta-1- glycoprotein 1	

## Applications

**Tested Applications:**  
Cytometric bead array, Indirect ELISA

**Species Specificity:**  
human

## Background Information

### Storage

**Storage:**  
Store at -80°C.  
**The product is shipped with ice packs. Upon receipt, store it immediately at -80°C**  
**Storage Buffer:**  
PBS only, pH7.3

For technical support and original validation data for this product please contact:

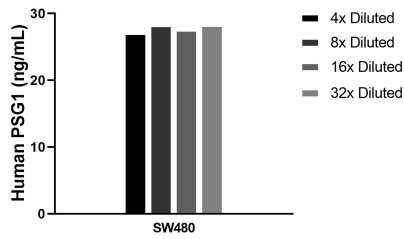
T: 4006900926

E: Proteintech-CN@ptglab.com

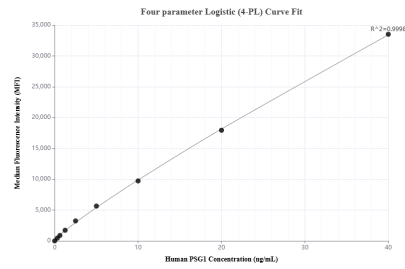
W: ptgcn.com

**This product is exclusively available under Proteintech Group brand and is not available to purchase from any other manufacturer.**

## Selected Validation Data



SW480 were cultured in DMEM supplemented with 10% fetal bovine serum, 2.5 mM L-glutamine, 100 U/mL penicillin, and 100 ug/mL streptomycin sulfate. An aliquot of the cell culture supernatants was removed, assayed for human PSG1, and measured 27.8 ng/mL.



Cytometric bead array standard curve of MP03180-1, PSG1 Recombinant Matched Antibody Pair, PBS Only. Capture antibody: 87751-2-PBS. Detection antibody: 87751-1-PBS. Standard: Eg3704. Range: 0.312-40 ng/mL.