

For Research Use Only

PTK2B Recombinant monoclonal antibody, PBS Only (Detector)

Catalog Number: 87746-2-PBS



Basic Information

Catalog Number: 87746-2-PBS	GenBank Accession Number: BC042599	Purification Method: Protein A purification
Source: Rabbit	GeneID (NCBI): 2185	CloneNo.: 253299A5
Isotype: IgG	UNIPROT ID: Q14289	
Immunogen Catalog Number: AG11487	Full Name: PTK2B protein tyrosine kinase 2 beta	
	Calculated MW: 1009 aa, 116 kDa	

Applications

Tested Applications:
Cytometric bead array, Sandwich ELISA, Indirect ELISA

Species Specificity:
human

Background Information

Storage

Storage:
Store at -80°C.
The product is shipped with ice packs. Upon receipt, store it immediately at -80°C

Storage Buffer:
PBS only, pH7.3

For technical support and original validation data for this product please contact:

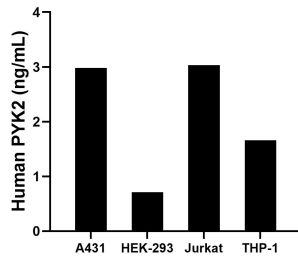
T: 4006900926

E: Proteintech-CN@ptglab.com

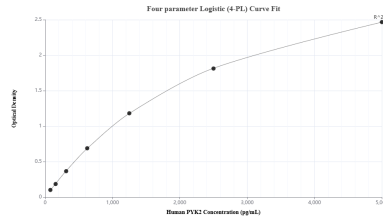
W: ptgcn.com

This product is exclusively available under Proteintech Group brand and is not available to purchase from any other manufacturer.

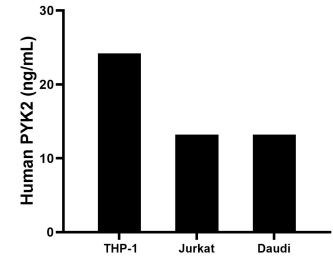
Selected Validation Data



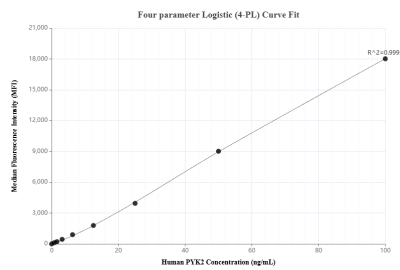
The mean PYK2 concentration was determined to be 2.98 ng/mL in A431 cell extract based on a 1.5 mg/mL extract load, 0.71 ng/mL in HEK-293 cell extract based on a 1.5 mg/mL extract load, 3.03 ng/mL in Jurkat cell extract based on a 1.2 mg/mL extract load and 1.66 ng/mL in THP-1 cell extract based on a 1.2 mg/mL extract load.



Sandwich ELISA standard curve of MP03196-1, Human PYK2 Recombinant Matched Antibody Pair - PBS only. 87746-3-PBS was coated to a plate as the capture antibody and incubated with serial dilutions of standard Ag11487. 87746-2-PBS was HRP conjugated as the detection antibody. Range: 78.1-5000 pg/mL



The mean PYK2 concentration was determined to be 24.2 ng/mL in THP-1 cell extract based on a 1.2 mg/mL extract load, 13.2 ng/mL in Jurkat cell extract based on a 1.2 mg/mL extract load, 13.2 ng/mL in Daudi cell extract based on a 1.2 mg/mL extract load.



Cytometric bead array standard curve of MP03196-1, PYK2 Recombinant Matched Antibody Pair, PBS Only. Capture antibody: 87746-3-PBS. Detection antibody: 87746-2-PBS. Standard: Ag11487. Range: 0.781-100 ng/mL