

For Research Use Only

# Mouse CD222/Igf2r Recombinant monoclonal antibody, PBS Only (Detector)

Catalog Number: 87733-3-PBS



## Basic Information

Catalog Number:

87733-3-PBS

Source:

Rabbit

Isotype:

IgG

Immunogen Catalog Number:

EG6300

GenBank Accession Number:

NM\_010515.2

GeneID (NCBI):

16004

UNIPROT ID:

Q07113

Full Name:

insulin-like growth factor 2 receptor

Calculated MW:

274 kDa

Purification Method:

Protein A purification

CloneNo.:

253081E9

## Applications

Tested Applications:

Sandwich ELISA, Indirect ELISA

Species Specificity:

mouse

## Background Information

### Storage

Storage:

Store at -80°C.

The product is shipped with ice packs. Upon receipt, store it immediately at -80°C

Storage Buffer:

PBS only, pH7.3

For technical support and original validation data for this product please contact:

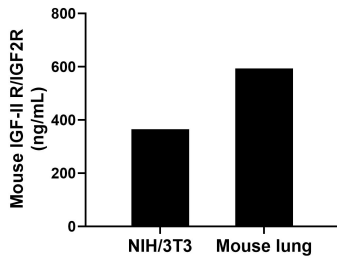
T: 4006900926

E: [Proteintech-CN@ptglab.com](mailto:Proteintech-CN@ptglab.com)

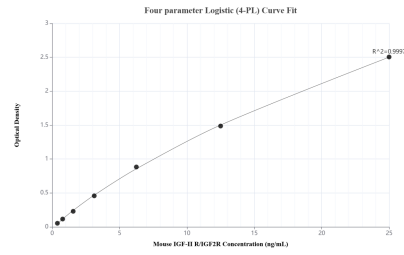
W: [ptgcn.com](http://ptgcn.com)

This product is exclusively available under Proteintech Group brand and is not available to purchase from any other manufacturer.

## Selected Validation Data



The mean IGF-II R/IGF2R concentration was determined to be 364.70 ng/mL in NIH/3T3 cell extract based on a 1.20 mg/mL extract load and 593.09 ng/mL in mouse lung extract based on a 5.00 mg/mL extract load.



Sandwich ELISA standard curve of MP03179-2, Mouse IGF-II R/IGF2R Recombinant Matched Antibody Pair - PBS only. 87733-2-PBS was coated to a plate as the capture antibody and incubated with serial dilutions of standard Eg6300. 87733-3-PBS was HRP conjugated as the detection antibody. Range: 0.391-25 ng/mL.