

For Research Use Only

IGBP1 Recombinant monoclonal antibody, PBS Only

Catalog Number:87726-1-PBS



Basic Information

Catalog Number: 87726-1-PBS	GenBank Accession Number: BC004137	Purification Method: Protein A purification
Source: Rabbit	GeneID (NCBI): 3476	CloneNo.: 253170E3
Isotype: IgG	UNIPROT ID: P78318	
Immunogen Catalog Number: AG6782	Full Name: immunoglobulin (CD79A) binding protein 1	
	Calculated MW: 39 kDa	
	Observed MW: 39 kDa	

Applications

Tested Applications:
WB, IF/ICC, IP, Indirect ELISA

Species Specificity:
human, mouse

Background Information

Immunoglobulin-binding protein 1 (IGBP1), also known as ALPHA-4, was originally identified as a signal transduction molecule coprecipitating with MB1 (CD79a) protein of the B-cell antigen receptor (BCR) complex. IGBP1 has been characterized as an essential regulator of the catalytic activity of protein phosphatase 2A (PP2A), which is a ubiquitous phosphatase with broad substrate specificity and diverse cellular functions.

Storage

Storage:
Store at -80°C.
The product is shipped with ice packs. Upon receipt, store it immediately at -80°C

Storage Buffer:
PBS only, pH7.3

For technical support and original validation data for this product please contact:

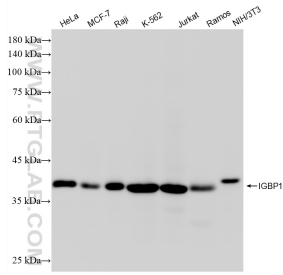
T: 4006900926

E: Proteintech-CN@ptglab.com

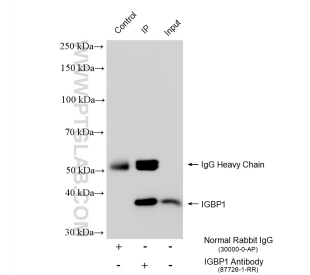
W: ptgcn.com

This product is exclusively available under Proteintech Group brand and is not available to purchase from any other manufacturer.

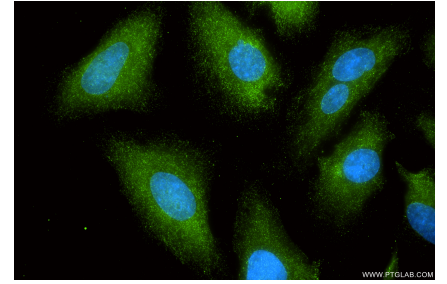
Selected Validation Data



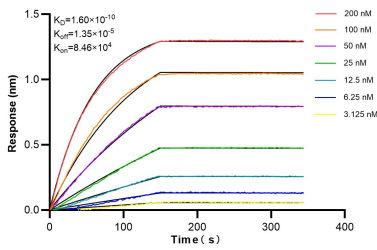
Various lysates were subjected to SDS PAGE followed by western blot with 87726-1-RR (IGBP1 antibody) at dilution of 1:5000 incubated at room temperature for 1.5 hours. This data was developed using the same antibody clone with 87726-1-PBS in a different storage buffer formulation.



IP result of anti-IGBP1 (IP:87726-1-RR, 4ug; Detection:87726-1-RR 1:1000) with Jurkat cells lysate 1080 ug. This data was developed using the same antibody clone with 87726-1-PBS in a different storage buffer formulation.



Immunofluorescent analysis of (-20°C Methanol) fixed HeLa cells using IGBP1 antibody (87726-1-RR, Clone: 253170E3) at dilution of 1:400 and CoraLite®488-Conjugated Goat Anti-Rabbit IgG(H+L) (SA00013-2). This data was developed using the same antibody clone with 87726-1-PBS in a different storage buffer formulation.



Biolayer interferometry (BLI) kinetic assays of 87726-1-RR against Human IGBP1 were performed. The affinity constant is 0.16 nM.