

For Research Use Only

SUFU Recombinant monoclonal antibody

Catalog Number:87724-1-RR



Basic Information

Catalog Number:

87724-1-RR

Source:

Rabbit

Isotype:

IgG

Immunogen Catalog Number:

AG25193

GenBank Accession Number:

BC013291

GeneID (NCBI):

51684

UNIPROT ID:

Q9UMX1

Full Name:

suppressor of fused homolog
(Drosophila)

Calculated MW:

54 kDa

Observed MW:

54 kDa

Purification Method:

Protein A purification

CloneNo.:

253256G1

Recommended Dilutions:

WB: 1:5000-1:50000

Applications

Tested Applications:

WB, ELISA

Species Specificity:

human, rat

Positive Controls:

WB : HeLa cells, HEK-293 cell, Jurkat cells, A431 cells, C6 cells

Background Information

Sufu (Suppressor of fused) is a central regulator of Hh (Hedgehog) signaling and acts as a tumor suppressor by maintaining the Gli (Glioma-associated oncogene homolog) transcription factors inactive. Loss of Sufu function promotes tumorigenesis.

Storage

Storage:

Store at -20°C. Stable for one year after shipment.

Storage Buffer:

PBS with 0.02% sodium azide and 50% glycerol, pH7.3

Aliquoting is unnecessary for -20°C storage

For technical support and original validation data for this product please contact:

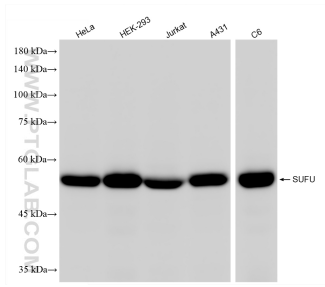
T: 4006900926

E: Proteintech-CN@ptglab.com

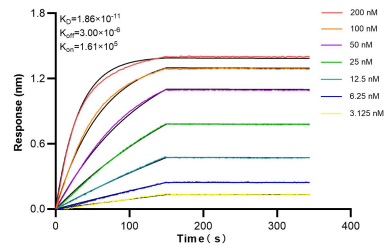
W: ptgcn.com

This product is exclusively available under Proteintech Group brand and is not available to purchase from any other manufacturer.

Selected Validation Data



Various lysates were subjected to SDS PAGE followed by western blot with 87724-1-RR (SUFU antibody) at dilution of 1:10000 incubated at room temperature for 1.5 hours.



Biolayer interferometry (BLI) kinetic assays of 87724-1-RR against Human SUFU were performed. The affinity constant is 18.6 pM.