

For Research Use Only

SUFU Recombinant monoclonal antibody, PBS Only (Detector)

Catalog Number:87724-1-PBS



Basic Information

Catalog Number: 87724-1-PBS	GenBank Accession Number: BC013291	Purification Method: Protein A purification
Source: Rabbit	GeneID (NCBI): 51684	CloneNo.: 253256G1
Isotype: IgG	UNIPROT ID: Q9UMX1	
Immunogen Catalog Number: AG25193	Full Name: suppressor of fused homolog (Drosophila)	
	Calculated MW: 54 kDa	
	Observed MW: 54 kDa	

Applications

Tested Applications:
WB, Cytometric bead array, Indirect ELISA

Species Specificity:
human, rat

Background Information

Sufu (Suppressor of fused) is a central regulator of Hh (Hedgehog) signaling and acts as a tumor suppressor by maintaining the Gli (Glioma-associated oncogene homolog) transcription factors inactive. Loss of Sufu function promotes tumorigenesis.

Storage

Storage:
Store at -80°C.
The product is shipped with ice packs. Upon receipt, store it immediately at -80°C

Storage Buffer:
PBS only, pH7.3

For technical support and original validation data for this product please contact:

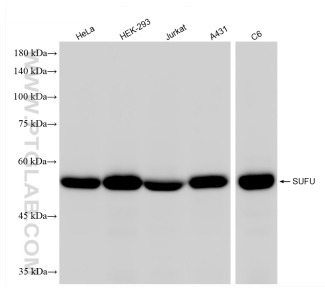
T: 4006900926

E: Proteintech-CN@ptglab.com

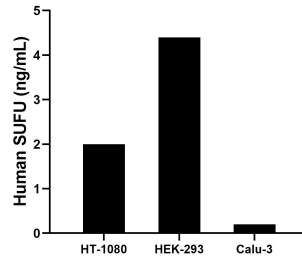
W: ptgcn.com

This product is exclusively available under Proteintech Group brand and is not available to purchase from any other manufacturer.

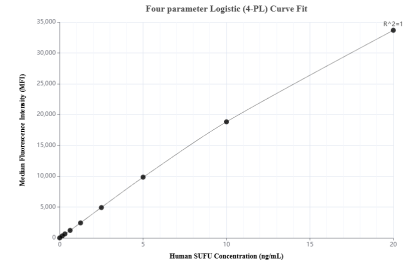
Selected Validation Data



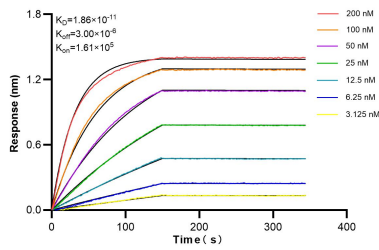
Various lysates were subjected to SDS PAGE followed by western blot with 87724-1-RR (SUFU antibody) at dilution of 1:100000 incubated at room temperature for 1.5 hours. This data was developed using the same antibody clone with 87724-1-PBS in a different storage buffer formulation.



The mean SUFU concentration was determined to be 2.0 ng/mL in HT-1080 cell extract based on a 1.5 mg/mL extract load, 4.4 ng/mL in HEK-293 cell extract based on a 1.2 mg/mL extract load, 0.2 ng/mL in Calu-3 cell extract based on a 1.2 mg/mL extract load.



Cytometric bead array standard curve of MP03174-1, SUFU Recombinant Matched Antibody Pair, PBS Only. Capture antibody: 87724-2-PBS. Detection antibody: 87724-1-PBS. Standard: Ag25193. Range: 0.312-40 ng/mL.



Biolayer interferometry (BLI) kinetic assays of 87724-1-RR against Human SUFU were performed. The affinity constant is 18.6 pM.