

For Research Use Only

HRH1 Recombinant monoclonal antibody, PBS Only (Capture)

Catalog Number:87723-2-PBS



Basic Information

Catalog Number: 87723-2-PBS	GenBank Accession Number: BC060802	Purification Method: Protein A purification
Source: Rabbit	GeneID (NCBI): 3269	CloneNo.: 253277A11
Isotype: IgG	UNIPROT ID: P35367	
Immunogen Catalog Number: AG30464	Full Name: histamine receptor H1	
	Calculated MW: 487 aa, 56 kDa	

Applications

Tested Applications:
Cytometric bead array, Indirect ELISA

Species Specificity:
human

Background Information

Storage

Storage:
Store at -80°C.
The product is shipped with ice packs. Upon receipt, store it immediately at -80°C

Storage Buffer:
PBS only, pH7.3

For technical support and original validation data for this product please contact:

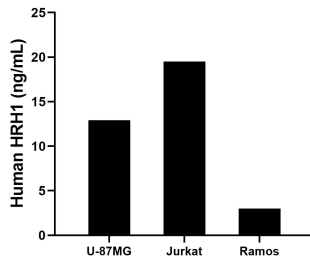
T: 4006900926

E: Proteintech-CN@ptglab.com

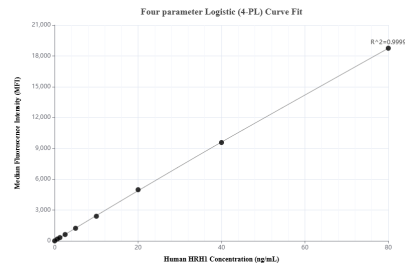
W: ptgcn.com

This product is exclusively available under Proteintech Group brand and is not available to purchase from any other manufacturer.

Selected Validation Data



The mean HRH1 concentration was determined to be 12.9 ng/mL in U-87MG cell extract based on a 1.2 mg/mL extract load, 19.5 ng/mL in Jurkat cell extract based on a 1.2 mg/mL extract load, 3.0 ng/mL in Ramos cell extract based on a 1.5 mg/mL extract load.



Cytometric bead array standard curve of MP03173-1, HRH1 Recombinant Matched Antibody Pair, PBS Only. Capture antibody: 87723-2-PBS. Detection antibody: 87723-1-PBS. Standard: Ag30464. Range: 0.625-80 ng/mL.