

For Research Use Only

# FOLR3 Recombinant monoclonal antibody, PBS Only (Capture)

Catalog Number:87719-3-PBS



## Basic Information

<b>Catalog Number:</b> 87719-3-PBS	<b>GenBank Accession Number:</b> NM_000804.3	<b>Purification Method:</b> Protein A purification
<b>Source:</b> Rabbit	<b>GeneID (NCBI):</b> 2352	<b>CloneNo.:</b> 250411F7
<b>Isotype:</b> IgG	<b>UNIPROT ID:</b> P41439	
<b>Immunogen Catalog Number:</b> EG3170	<b>Full Name:</b> folate receptor 3 (gamma)	
	<b>Calculated MW:</b> 28kDa	

## Applications

**Tested Applications:**  
Sandwich ELISA, Indirect ELISA

**Species Specificity:**  
human

## Background Information

### Storage

**Storage:**  
Store at -80°C.  
**The product is shipped with ice packs. Upon receipt, store it immediately at -80°C**

**Storage Buffer:**  
PBS only, pH7.3

For technical support and original validation data for this product please contact:

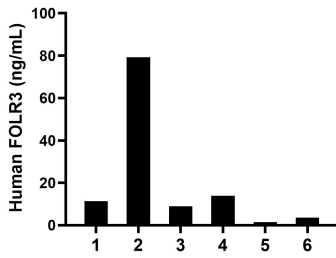
T: 4006900926

E: [Proteintech-CN@ptglab.com](mailto:Proteintech-CN@ptglab.com)

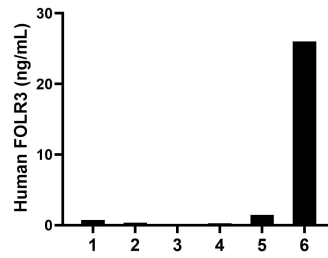
W: [ptgcn.com](http://ptgcn.com)

**This product is exclusively available under Proteintech Group brand and is not available to purchase from any other manufacturer.**

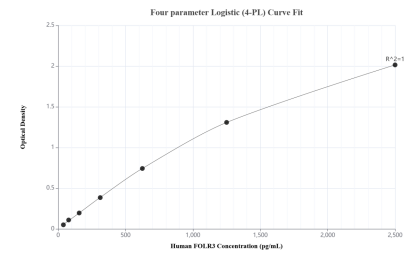
## Selected Validation Data



Serum of six individual healthy human donors was measured. The FOLR3 concentration of detected samples was determined to be 19.7 ng/mL with a range of 1.4-79.2 ng/mL.



Plasma of six individual healthy human donors was measured. The FOLR3 concentration of detected samples was determined to be 4.8 ng/mL with a range of 0.1-26.0 ng/mL.



Sandwich ELISA standard curve of MP03170-2, Human FOLR3 Recombinant Matched Antibody Pair - PBS only. 87719-3-PBS was coated to a plate as the capture antibody and incubated with serial dilutions of standard Eg3170. 87719-1-PBS was HRP conjugated as the detection antibody. Range: 39.1-2500 pg/mL.