

For Research Use Only

# DKK3 Recombinant monoclonal antibody, PBS Only (Capture)

Catalog Number: 87713-3-PBS



## Basic Information

<b>Catalog Number:</b> 87713-3-PBS	<b>GenBank Accession Number:</b> NM_015881.5, NM_013253.4, NM_001018057.1	<b>Purification Method:</b> Protein A purification
<b>Source:</b> Rabbit	<b>GeneID (NCBI):</b> 27122	<b>CloneNo.:</b> 253091F4
<b>Isotype:</b> IgG	<b>UNIPROT ID:</b> Q9UBP4	
<b>Immunogen Catalog Number:</b> EG6731	<b>Full Name:</b> dickkopf homolog 3 (Xenopus laevis)	
	<b>Calculated MW:</b> 38 kDa	

## Applications

**Tested Applications:**  
Cytometric bead array, Sandwich ELISA, Indirect ELISA

**Species Specificity:**  
human

## Background Information

### Storage

**Storage:**  
Store at -80°C.  
**The product is shipped with ice packs. Upon receipt, store it immediately at -80°C**

**Storage Buffer:**  
PBS only, pH7.3

For technical support and original validation data for this product please contact:

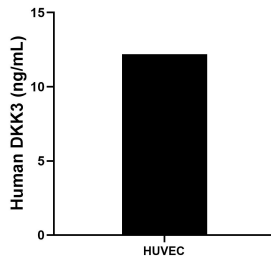
T: 4006900926

E: [Proteintech-CN@ptglab.com](mailto:Proteintech-CN@ptglab.com)

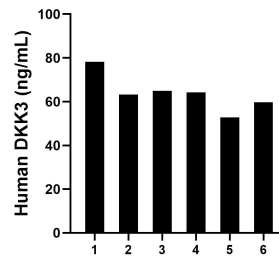
W: [ptgcn.com](http://ptgcn.com)

**This product is exclusively available under Proteintech Group brand and is not available to purchase from any other manufacturer.**

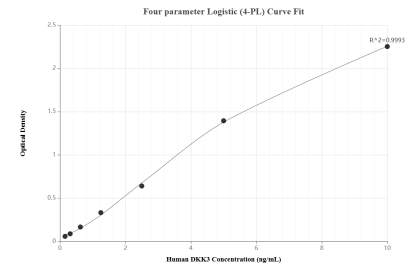
## Selected Validation Data



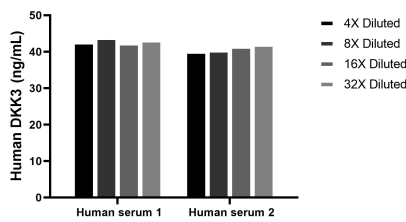
HUVEC human umbilical vein endothelial cells were cultured in EGM-2. Aliquots of the cell culture supernatants were removed, assayed for levels of DKK3, and measured 12.24 ng/mL



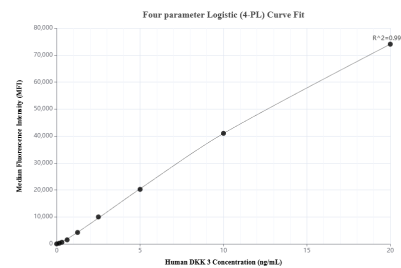
Plasma of six individual healthy human donors was measured. The human DKK3 concentration of detected samples was determined to be 63.82 ng/mL with a range of 52.74-78.16 ng/mL



Sandwich ELISA standard curve of MP03175-1, Human DKK3 Recombinant Matched Antibody Pair - PBS only. 87713-3-PBS was coated to a plate as the capture antibody and incubated with serial dilutions of standard Eg6731. 87713-2-PBS was HRP conjugated as the detection antibody. Range: 0.156-10 ng/mL



The mean DKK3 concentration was determined to be 43.0 ng/mL in human serum 1, 41.0 ng/mL in human serum 2.



Cytometric bead array standard curve of MP03175-1, DKK3 Recombinant Matched Antibody Pair, PBS Only. Capture antibody: 87713-3-PBS. Detection antibody: 87713-2-PBS. Standard: Eg6731. Range: 0.156-20 ng/mL