

For Research Use Only

DKK3 Recombinant monoclonal antibody, PBS Only (Detector)

Catalog Number: 87713-2-PBS



Basic Information

Catalog Number:

87713-2-PBS

Source:

Rabbit

Isotype:

IgG

Immunogen Catalog Number:

EG6731

GenBank Accession Number:

NM_015881.5, NM_013253.4,

NM_001018057.1

GeneID (NCBI):

27122

UNIPROT ID:

Q9UBP4

Full Name:

dickkopf homolog 3 (Xenopus laevis)

Calculated MW:

38 kDa

Purification Method:

Protein A purification

CloneNo.:

253091F2

Applications

Tested Applications:

Cytometric bead array, Sandwich ELISA, Indirect ELISA

Species Specificity:

human

Background Information

Storage

Storage:

Store at -80°C.

The product is shipped with ice packs. Upon receipt, store it immediately at -80°C

Storage Buffer:

PBS only, pH7.3

For technical support and original validation data for this product please contact:

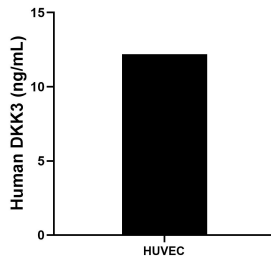
T: 4006900926

E: Proteintech-CN@ptglab.com

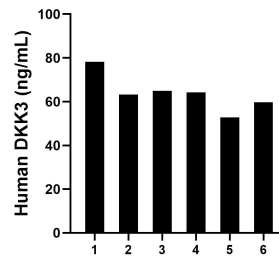
W: ptgcn.com

This product is exclusively available under Proteintech Group brand and is not available to purchase from any other manufacturer.

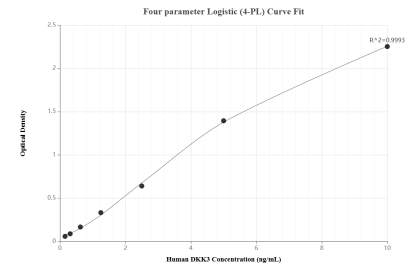
Selected Validation Data



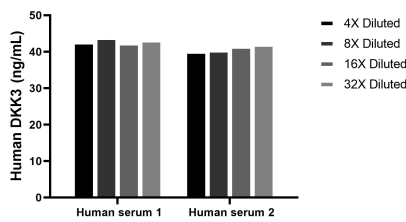
HUVEC human umbilical vein endothelial cells were cultured in EGM-2. Aliquots of the cell culture supernatants were removed, assayed for levels of DKK3, and measured 12.24 ng/mL



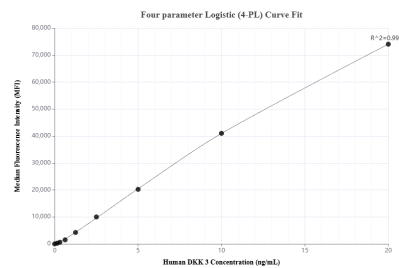
Plasma of six individual healthy human donors was measured. The human DKK3 concentration of detected samples was determined to be 63.82 ng/mL with a range of 52.74-78.16 ng/mL



Sandwich ELISA standard curve of MP03175-1, Human DKK3 Recombinant Matched Antibody Pair - PBS only. 87713-3-PBS was coated to a plate as the capture antibody and incubated with serial dilutions of standard Eg6731. 87713-2-PBS was HRP conjugated as the detection antibody. Range: 0.156-10 ng/mL



The mean DKK3 concentration was determined to be 43.0 ng/mL in human serum 1, 41.0 ng/mL in human serum 2.



Cytometric bead array standard curve of MP03175-1, DKK3 Recombinant Matched Antibody Pair, PBS Only. Capture antibody: 87713-3-PBS. Detection antibody: 87713-2-PBS. Standard: Eg6731. Range: 0.156-20 ng/mL