

For Research Use Only

# CIB1 Recombinant monoclonal antibody, PBS Only (Detector)

Catalog Number:87697-4-PBS



## Basic Information

<b>Catalog Number:</b> 87697-4-PBS	<b>GenBank Accession Number:</b> NM_006384.3	<b>Purification Method:</b> Protein A purification
<b>Source:</b> Rabbit	<b>GeneID (NCBI):</b> 10519	<b>CloneNo.:</b> 253241F10
<b>Isotype:</b> IgG	<b>UNIPROT ID:</b> Q99828-1	
<b>Immunogen Catalog Number:</b> EG5476	<b>Full Name:</b> calcium and integrin binding 1 (calmyrin)	
	<b>Calculated MW:</b> 22 kDa	

## Applications

**Tested Applications:**  
Sandwich ELISA, Indirect ELISA

**Species Specificity:**  
human

## Background Information

### Storage

**Storage:**  
Store at -80°C.  
**The product is shipped with ice packs. Upon receipt, store it immediately at -80°C**

**Storage Buffer:**  
PBS only, pH7.3

For technical support and original validation data for this product please contact:

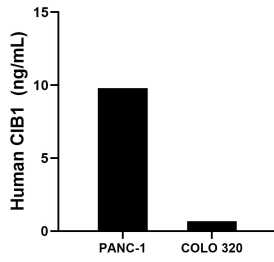
T: 4006900926

E: [Proteintech-CN@ptglab.com](mailto:Proteintech-CN@ptglab.com)

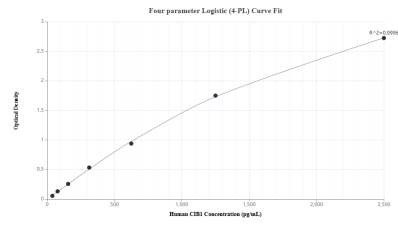
W: [ptgcn.com](http://ptgcn.com)

**This product is exclusively available under Proteintech Group brand and is not available to purchase from any other manufacturer.**

## Selected Validation Data



The mean CIB1 concentration was determined to be 9.84 ng/mL in PANC-1 cell extract based on a 1.2 mg/mL extract load and 0.67 ng/mL in COLO 320 cell extract based on a 1.2 mg/mL extract load.



Sandwich ELISA standard curve of MP03171-2, Human CIB1 Recombinant Matched Antibody Pair - PBS only. 87697-3-PBS was coated to a plate as the capture antibody and incubated with serial dilutions of standard Eg5476. 87697-4-PBS was HRP conjugated as the detection antibody. Range: 39.1-2500 pg/mL