

For Research Use Only

CIB1 Recombinant monoclonal antibody, PBS Only (Capture)

Catalog Number:87697-3-PBS



Basic Information

Catalog Number: 87697-3-PBS	GenBank Accession Number: NM_006384.3	Purification Method: Protein A purification
Source: Rabbit	GeneID (NCBI): 10519	CloneNo.: 253241B12
Isotype: IgG	UNIPROT ID: Q99828-1	
Immunogen Catalog Number: EG5476	Full Name: calcium and integrin binding 1 (calmyrin)	
	Calculated MW: 22 kDa	

Applications

Tested Applications:
Cytometric bead array, Sandwich ELISA, Indirect ELISA

Species Specificity:
human

Background Information

Storage

Storage:
Store at -80°C.
The product is shipped with ice packs. Upon receipt, store it immediately at -80°C

Storage Buffer:
PBS only, pH7.3

For technical support and original validation data for this product please contact:

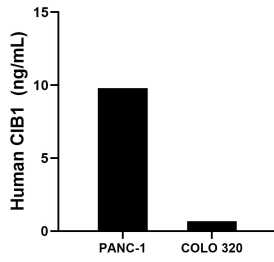
T: 4006900926

E: Proteintech-CN@ptglab.com

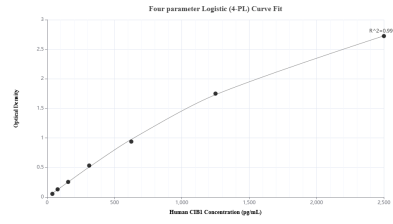
W: ptgcn.com

This product is exclusively available under Proteintech Group brand and is not available to purchase from any other manufacturer.

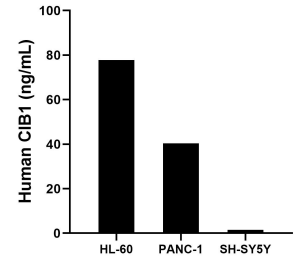
Selected Validation Data



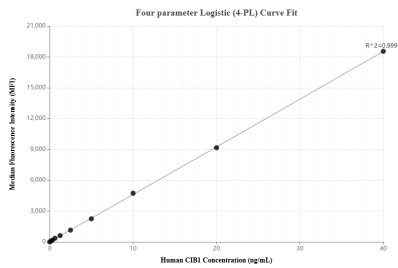
The mean CIB1 concentration was determined to be 9.84 ng/mL in PANC-1 cell extract based on a 1.2 mg/mL extract load and 0.67 ng/mL in COLO 320 cell extract based on a 1.2 mg/mL extract load.



Sandwich ELISA standard curve of MP03171-2, Human CIB1 Recombinant Matched Antibody Pair - PBS only. 87697-3-PBS was coated to a plate as the capture antibody and incubated with serial dilutions of standard Eg5476. 87697-4-PBS was HRP conjugated as the detection antibody. Range: 39.1-2500 pg/mL



The mean CIB1 concentration was determined to be 77.8 ng/mL in HL-60 cell extract based on a 1.2 mg/mL extract load, 40.4 ng/mL in PANC-1 cell extract based on a 1.2 mg/mL extract load, 1.5 ng/mL in SH-SY5Y cell extract based on a 1.2 mg/mL extract load.



Cytometric bead array standard curve of MP03171-1, CIB1 Recombinant Matched Antibody Pair, PBS Only. Capture antibody: 87697-3-PBS. Detection antibody: 87697-2-PBS. Standard: Eg5476. Range: 0.156-40 ng/mL