

For Research Use Only

CIB1 Recombinant monoclonal antibody, PBS Only (Detector)

Catalog Number:87697-2-PBS



Basic Information

Catalog Number:

87697-2-PBS

Source:

Rabbit

Isotype:

IgG

Immunogen Catalog Number:

EG5476

GenBank Accession Number:

NM_006384.3

GeneID (NCBI):

10519

UNIPROT ID:

Q99828-1

Full Name:

calcium and integrin binding 1
(calmyrin)

Calculated MW:

22 kDa

Purification Method:

Protein A purification

CloneNo.:

253241A11

Applications

Tested Applications:

Cytometric bead array, Indirect ELISA

Species Specificity:

human

Background Information

Storage

Storage:

Store at -80°C.

The product is shipped with ice packs. Upon receipt, store it immediately at -80°C

Storage Buffer:

PBS only, pH7.3

For technical support and original validation data for this product please contact:

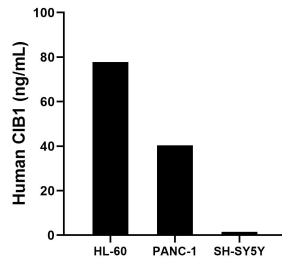
T: 4006900926

E: Proteintech-CN@ptglab.com

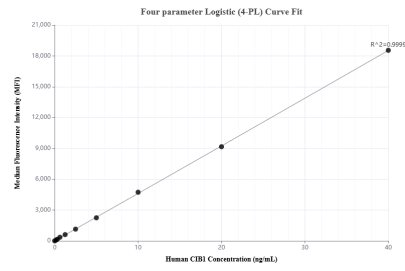
W: ptgcn.com

This product is exclusively available under Proteintech Group brand and is not available to purchase from any other manufacturer.

Selected Validation Data



The mean CIB1 concentration was determined to be 77.8 ng/mL in HL-60 cell extract based on a 1.2 mg/mL extract load, 40.4 ng/mL in PANC-1 cell extract based on a 1.2 mg/mL extract load, 1.5 ng/mL in SH-SY5Y cell extract based on a 1.2 mg/mL extract load.



Cytometric bead array standard curve of MP03171-1, CIB1 Recombinant Matched Antibody Pair, PBS Only. Capture antibody: 87697-3-PBS. Detection antibody: 87697-2-PBS. Standard: Eg5476. Range: 0.156-40 ng/mL.