

For Research Use Only

Mouse PTPRF Recombinant monoclonal antibody, PBS Only (Capture)

Catalog Number:87690-2-PBS



Basic Information

Catalog Number: 87690-2-PBS	GenBank Accession Number: NM_011213.2	Purification Method: Protein A purification
Source: Rabbit	GeneID (NCBI): 19268	CloneNo.: 253228G4
Isotype: IgG	UNIPROT ID: A2A8L5	
Immunogen Catalog Number: EG6805	Full Name: protein tyrosine phosphatase, receptor type, F	
	Calculated MW: 211 kDa	

Applications

Tested Applications:
Cytometric bead array, Indirect ELISA

Species Specificity:
mouse

Background Information

Storage

Storage:
Store at -80°C.
The product is shipped with ice packs. Upon receipt, store it immediately at -80°C
Storage Buffer:
PBS only, pH7.3

For technical support and original validation data for this product please contact:

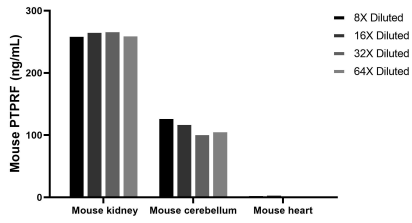
T: 4006900926

E: Proteintech-CN@ptglab.com

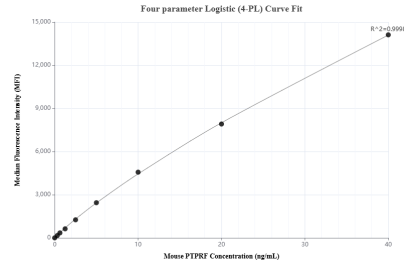
W: ptgcn.com

This product is exclusively available under Proteintech Group brand and is not available to purchase from any other manufacturer.

Selected Validation Data



The mean PTPRF concentration was determined to be 264.8 ng/mL in mouse kidney tissue extract based on a 8.4 mg/mL extract load, 114.9 ng/mL in mouse cerebellum tissue extract based on a 6.0 mg/mL extract load, 5.4 ng/mL in mouse heart tissue extract based on a 5.4 mg/mL extract load.



Cytometric bead array standard curve of MP03157-1, MOUSE PTPRF Recombinant Matched Antibody Pair, PBS Only. Capture antibody: 87690-2-PBS. Detection antibody: 87690-1-PBS. Standard: Eg6805. Range: 0.312-40 ng/mL.