

For Research Use Only

Mouse CD238/Kell/KEL Recombinant monoclonal antibody, PBS Only (Detector)

Catalog Number: 87688-1-PBS



Basic Information

Catalog Number: 87688-1-PBS	GenBank Accession Number: NM_032540.3	Purification Method: Protein A purification
Source: Rabbit	GeneID (NCBI): 23925	CloneNo.: 253180D2
Isotype: IgG	UNIPROT ID: Q9EQF2	
Immunogen Catalog Number: EG6305	Full Name: Kell blood group	
	Calculated MW: 81 kDa	

Applications

Tested Applications:
Cytometric bead array, Indirect ELISA

Species Specificity:
mouse

Background Information

Storage

Storage:
Store at -80°C.
The product is shipped with ice packs. Upon receipt, store it immediately at -80°C

Storage Buffer:
PBS only, pH7.3

For technical support and original validation data for this product please contact:

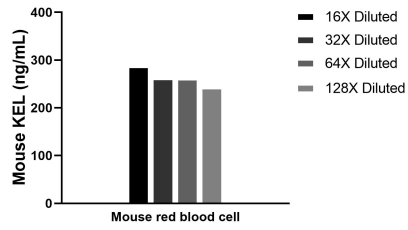
T: 4006900926

E: Proteintech-CN@ptglab.com

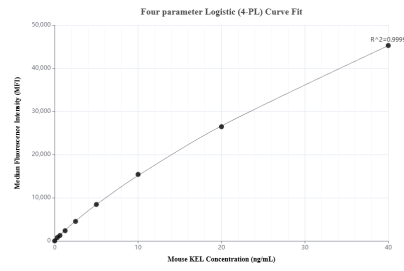
W: ptgcn.com

This product is exclusively available under Proteintech Group brand and is not available to purchase from any other manufacturer.

Selected Validation Data



The mean KEL concentration was determined to be 263.0 ng/mL in mouse red blood cell lysate.



Cytometric bead array standard curve of MP03154-1, MOUSE KEL Recombinant Matched Antibody Pair, PBS Only. Capture antibody: 87688-2-PBS. Detection antibody: 87688-1-PBS. Standard: Eg6305. Range: 0.312-40 ng/mL.