

For Research Use Only

# Collagen Type XXIII Recombinant monoclonal antibody

Catalog Number:87687-3-RR



## Basic Information

<b>Catalog Number:</b> 87687-3-RR	<b>GenBank Accession Number:</b> NM_173465.3	<b>Purification Method:</b> Protein A purification
<b>Source:</b> Rabbit	<b>GeneID (NCBI):</b> 91522	<b>CloneNo.:</b> 253143A9
<b>Isotype:</b> IgG	<b>UNIPROT ID:</b> Q86Y22	<b>Recommended Dilutions:</b> WB: 1:5000-1:50000
<b>Immunogen Catalog Number:</b> EG4452	<b>Full Name:</b> collagen, type XXIII, alpha 1	
	<b>Calculated MW:</b> 52 kDa	
	<b>Observed MW:</b> 68-75 kDa	

## Applications

**Tested Applications:**  
WB, ELISA

**Species Specificity:**  
human, mouse, rat

**Positive Controls:**

WB : mouse lung tissue, mouse brain tissue, rat brain tissue, fetal human brain tissue

## Background Information

Collagen XXIII is a type II transmembrane protein and the fourth in the subfamily of non-fibrillar transmembranous collagens. This kind of collagens have a single pass hydrophobic transmembrane domain. The molecule of collagen XXIII can be found either in membrane-bond form or in shed form. Type XXIII collagen is expressed in both adult tissues and developing organs. It can be found in the epidermis and other epithelia such as those in tongue, gut and lung, but also in the brain, the kidney and the cornea. It has been shown that in prostate collagen XXIII expression is associated with tumor progression.

## Storage

**Storage:**  
Store at -20°C. Stable for one year after shipment.

**Storage Buffer:**  
PBS with 0.02% sodium azide and 50% glycerol, pH7.3

Aliquoting is unnecessary for -20°C storage

For technical support and original validation data for this product please contact:

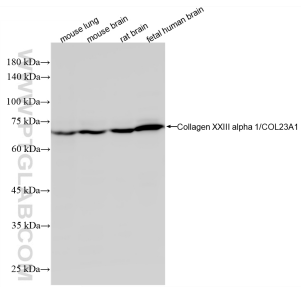
T: 4006900926

E: [Proteintech-CN@ptglab.com](mailto:Proteintech-CN@ptglab.com)

W: [ptgcn.com](http://ptgcn.com)

**This product is exclusively available under Proteintech Group brand and is not available to purchase from any other manufacturer.**

## Selected Validation Data



Various lysates were subjected to SDS PAGE followed by western blot with 87687-3-RR (Collagen XXIII alpha 1/ COL23A1 antibody) at dilution of 1:10000 incubated at room temperature for 1.5 hours.