

For Research Use Only

AADACL1 Recombinant monoclonal antibody, PBS Only

Catalog Number:87679-2-PBS



Basic Information

Catalog Number: 87679-2-PBS	GenBank Accession Number: BC047588	Purification Method: Protein A purification
Source: Rabbit	GeneID (NCBI): 57552	CloneNo.: 253123B2
Isotype: IgG	UNIPROT ID: Q6PIU2	
Immunogen Catalog Number: AG5136	Full Name: arylacetamide deacetylase-like 1	
	Calculated MW: 46 kDa	
	Observed MW: 40-50 kDa	

Applications

Tested Applications:
WB, Indirect ELISA

Species Specificity:
human, rat

Background Information

AADACL1(Arylacetamide deacetylase-like 1) is also named as NCEH1, KIAA1363 and belongs to the 'GDYG' lipolytic enzyme family. The transmembrane enzyme, AADACL1, controls the production of the monoalkylglycerol ether (MAGE) class of NELS in cancer cells and acts as a 2-acetyl MAGE hydrolase and is likely the principal source for this activity in tumor cells(PMID:21513884). The full length protein has three glycosylation sites and can be N-glycosylated(PMID:19159218). It has 3 isoforms produced by alternative splicing.

Storage

Storage:
Store at -80°C.
The product is shipped with ice packs. Upon receipt, store it immediately at -80°C

Storage Buffer:
PBS only, pH7.3

For technical support and original validation data for this product please contact:

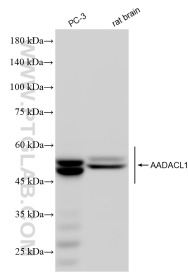
T: 4006900926

E: Proteintech-CN@ptglab.com

W: ptgcn.com

This product is exclusively available under Proteintech Group brand and is not available to purchase from any other manufacturer.

Selected Validation Data



Various lysates were subjected to SDS PAGE followed by western blot with 87679-2-RR (AADACL1 antibody) at dilution of 1:5000 incubated at room temperature for 1.5 hours. This data was developed using the same antibody clone with 87679-2-PBS in a different storage buffer formulation.