

For Research Use Only

# Smoothelin Recombinant monoclonal antibody

Catalog Number: 87674-7-RR



## Basic Information

<b>Catalog Number:</b> 87674-7-RR	<b>GenBank Accession Number:</b> BC034237	<b>Purification Method:</b> Protein A purification
<b>Source:</b> Rabbit	<b>GeneID (NCBI):</b> 6525	<b>CloneNo.:</b> 253233C1
<b>Isotype:</b> IgG	<b>UNIPROT ID:</b> P53814	<b>Recommended Dilutions:</b> WB: 1:500-1:2000
<b>Immunogen Catalog Number:</b> AG19983	<b>Full Name:</b> smoothelin	
	<b>Calculated MW:</b> 940 aa, 102 kDa	
	<b>Observed MW:</b> 59 kDa and 117 kDa	

## Applications

<b>Tested Applications:</b> WB, ELISA	<b>Positive Controls:</b> WB : 5637 cells, COLO 320 cells, mouse colon tissue, PC-3 cells, MCF-7 cells, rat colon tissue
<b>Species Specificity:</b> human, mouse, rat	

## Background Information

Smoothelin is a cytoskeletal-associated protein expressed specifically in differentiated smooth muscle cells (SMCs). It exists in two main isoforms: the ~59 kDa Smoothelin-A in visceral SMCs and the ~110 kDa Smoothelin-B in vascular SMCs, generated through a dual-promoter system and alternative splicing. Smoothelin serves as a reliable marker of contractile SMCs and helps maintain the contractile phenotype by interacting with actin filaments and other cytoskeletal components. This antibody reacts with the 59 kDa and 117 kDa bands, corresponding to isoforms A and B, respectively.

## Storage

**Storage:**  
Store at -20°C. Stable for one year after shipment.  
**Storage Buffer:**  
PBS with 0.02% sodium azide and 50% glycerol, pH7.3  
Aliquoting is unnecessary for -20°C storage

For technical support and original validation data for this product please contact:

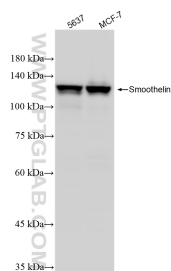
T: 4006900926

E: [Proteintech-CN@ptglab.com](mailto:Proteintech-CN@ptglab.com)

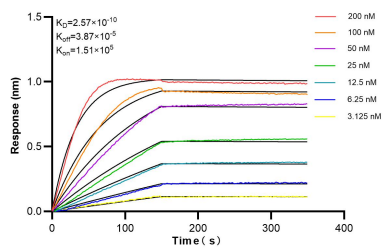
W: [ptgcn.com](http://ptgcn.com)

**This product is exclusively available under Proteintech Group brand and is not available to purchase from any other manufacturer.**

## Selected Validation Data



Various lysates were subjected to SDS PAGE followed by western blot with 87674-7-RR (Smoothelin antibody) at dilution of 1:1000 incubated at room temperature for 1.5 hours.



Biolayer interferometry (BLI) kinetic assays of 87674-7-RR against Human Smoothelin were performed. The affinity constant is 0.257 nM.