

For Research Use Only

# Smoothelin Recombinant monoclonal antibody, PBS Only

Catalog Number: 87674-7-PBS



## Basic Information

Catalog Number:

87674-7-PBS

Source:

Rabbit

Isotype:

IgG

Immunogen Catalog Number:

AG19983

GenBank Accession Number:

BC034237

GeneID (NCBI):

6525

UNIPROT ID:

P53814

Full Name:

smoothelin

Calculated MW:

940 aa, 102 kDa

Observed MW:

59 kDa and 117 kDa

Purification Method:

Protein A purification

CloneNo.:

253233C1

## Applications

Tested Applications:

WB, Indirect ELISA

Species Specificity:

human, mouse, rat

## Background Information

Smoothelin is a cytoskeletal-associated protein expressed specifically in differentiated smooth muscle cells (SMCs). It exists in two main isoforms: the ~59 kDa Smoothelin-A in visceral SMCs and the ~110 kDa Smoothelin-B in vascular SMCs, generated through a dual-promoter system and alternative splicing. Smoothelin serves as a reliable marker of contractile SMCs and helps maintain the contractile phenotype by interacting with actin filaments and other cytoskeletal components. This antibody reacts with the 59 kDa and 117 kDa bands, corresponding to isoforms A and B, respectively.

## Storage

Storage:

Store at -80°C.

**The product is shipped with ice packs. Upon receipt, store it immediately at -80°C**

Storage Buffer:

PBS only, pH7.3

For technical support and original validation data for this product please contact:

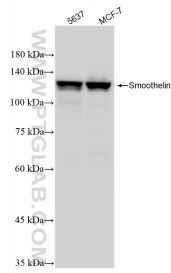
T: 4006900926

E: [Proteintech-CN@ptglab.com](mailto:Proteintech-CN@ptglab.com)

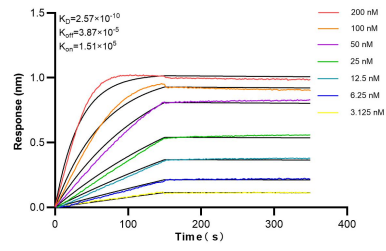
W: [ptgcn.com](http://ptgcn.com)

**This product is exclusively available under Proteintech Group brand and is not available to purchase from any other manufacturer.**

## Selected Validation Data



Various lysates were subjected to SDS PAGE followed by western blot with 87674-7-RR (Smoothelin antibody) at dilution of 1:1000 incubated at room temperature for 1.5 hours. This data was developed using the same antibody clone with 87674-7-PBS in a different storage buffer formulation.



Biolayer interferometry (BLI) kinetic assays of 87674-7-RR against Human Smoothelin were performed. The affinity constant is 0.257 nM.