

For Research Use Only

# SPRY4 Recombinant monoclonal antibody, PBS Only (Detector)

Catalog Number:87666-5-PBS



## Basic Information

<b>Catalog Number:</b> 87666-5-PBS	<b>GenBank Accession Number:</b> BC125095	<b>Purification Method:</b> Protein A purification
<b>Source:</b> Rabbit	<b>GeneID (NCBI):</b> 81848	<b>CloneNo.:</b> 253045E6
<b>Isotype:</b> IgG	<b>UNIPROT ID:</b> Q9C004	
<b>Immunogen Catalog Number:</b> AG18574	<b>Full Name:</b> sprouty homolog 4 (Drosophila)	
	<b>Calculated MW:</b> 299 aa, 33 kDa	

## Applications

**Tested Applications:**  
Sandwich ELISA, Indirect ELISA

**Species Specificity:**  
human

## Background Information

### Storage

**Storage:**  
Store at -80°C.  
**The product is shipped with ice packs. Upon receipt, store it immediately at -80°C**

**Storage Buffer:**  
PBS only, pH7.3

For technical support and original validation data for this product please contact:

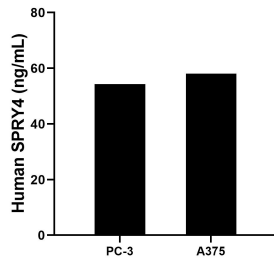
T: 4006900926

E: Proteintech-CN@ptglab.com

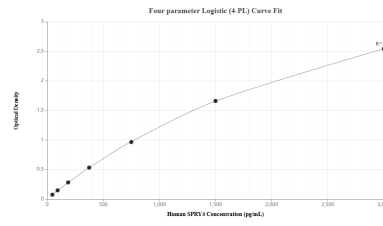
W: ptgcn.com

**This product is exclusively available under Proteintech Group brand and is not available to purchase from any other manufacturer.**

## Selected Validation Data



The mean SPRY4 concentration was determined to be 54.31 ng/mL in PC-3 cell extract based on a 1.2 mg/mL extract load and 58.09 ng/mL in A375 cell extract based on a 2.0 mg/mL extract load.



Sandwich ELISA standard curve of MP03152-2, Human SPRY4 Recombinant Matched Antibody Pair - PBS only. 87666-4-PBS was coated to a plate as the capture antibody and incubated with serial dilutions of standard Ag18574. 87666-5-PBS was HRP conjugated as the detection antibody. Range: 46.9-3000 pg/mL