

For Research Use Only

SPRY4 Recombinant monoclonal antibody, PBS Only (Capture)

Catalog Number:87666-4-PBS



Basic Information

Catalog Number: 87666-4-PBS	GenBank Accession Number: BC125095	Purification Method: Protein A purification
Source: Rabbit	GeneID (NCBI): 81848	CloneNo.: 253045F10
Isotype: IgG	UNIPROT ID: Q9C004	
Immunogen Catalog Number: AG18574	Full Name: sprouty homolog 4 (Drosophila)	
	Calculated MW: 299 aa, 33 kDa	
	Observed MW: 38 kDa	

Applications

Tested Applications:
WB, Sandwich ELISA, Indirect ELISA

Species Specificity:
human

Background Information

Storage

Storage:
Store at -80°C.
The product is shipped with ice packs. Upon receipt, store it immediately at -80°C

Storage Buffer:
PBS only, pH7.3

For technical support and original validation data for this product please contact:

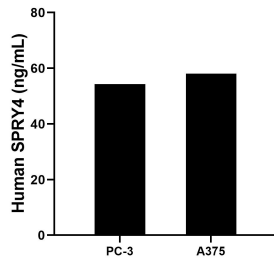
T: 4006900926

E: Proteintech-CN@ptglab.com

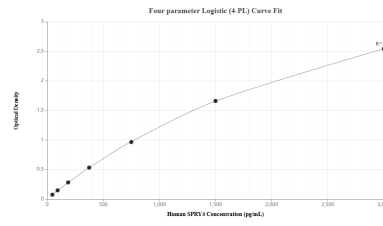
W: ptgcn.com

This product is exclusively available under Proteintech Group brand and is not available to purchase from any other manufacturer.

Selected Validation Data



The mean SPRY4 concentration was determined to be 54.31 ng/mL in PC-3 cell extract based on a 1.2 mg/mL extract load and 58.09 ng/mL in A375 cell extract based on a 2.0 mg/mL extract load.



Sandwich ELISA standard curve of MP03152-2, Human SPRY4 Recombinant Matched Antibody Pair - PBS only. 87666-4-PBS was coated to a plate as the capture antibody and incubated with serial dilutions of standard Ag18574. 87666-5-PBS was HRP conjugated as the detection antibody. Range: 46.9-3000 pg/mL