

For Research Use Only

SPRY4 Recombinant monoclonal antibody, PBS Only (Capture)

Catalog Number: 87666-3-PBS



Basic Information

Catalog Number: 87666-3-PBS	GenBank Accession Number: BC125095	Purification Method: Protein A purification
Source: Rabbit	GeneID (NCBI): 81848	CloneNo.: 253045B4
Isotype: IgG	UNIPROT ID: Q9C004	
Immunogen Catalog Number: AG18574	Full Name: sprouty homolog 4 (Drosophila)	
	Calculated MW: 299 aa, 33 kDa	

Applications

Tested Applications:
Cytometric bead array, Indirect ELISA

Species Specificity:
human

Background Information

Storage

Storage:
Store at -80°C.
The product is shipped with ice packs. Upon receipt, store it immediately at -80°C

Storage Buffer:
PBS only, pH7.3

For technical support and original validation data for this product please contact:

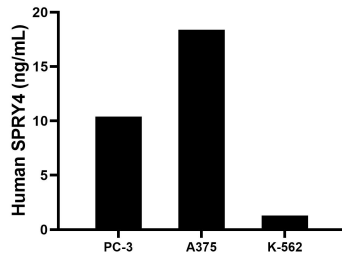
T: 4006900926

E: Proteintech-CN@ptglab.com

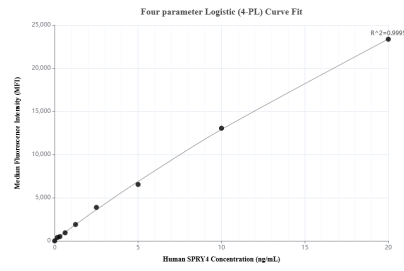
W: ptgcn.com

This product is exclusively available under Proteintech Group brand and is not available to purchase from any other manufacturer.

Selected Validation Data



The mean SPRY4 concentration was determined to be 10.4 ng/mL in PC-3 cell extract based on a 1.2 mg/mL extract load, 18.4 ng/mL in A375 cell extract based on a 1.6 mg/mL extract load, 1.3 ng/mL in K-562 cell extract based on a 1.2 mg/mL extract load.



Cytometric bead array standard curve of MP03152-1, SPRY4 Recombinant Matched Antibody Pair, PBS Only. Capture antibody: 87666-3-PBS. Detection antibody: 87666-2-PBS. Standard: Ag18574. Range: 0.156-20 ng/mL.