

For Research Use Only

# Carboxypeptidase M Recombinant monoclonal antibody

Catalog Number:87661-1-RR



## Basic Information

<b>Catalog Number:</b> 87661-1-RR	<b>GenBank Accession Number:</b> NM_198320.5	<b>Purification Method:</b> Protein A purification
<b>Source:</b> Rabbit	<b>GeneID (NCBI):</b> 1368	<b>CloneNo.:</b> 252972G3
<b>Isotype:</b> IgG	<b>UNIPROT ID:</b> P14384	<b>Recommended Dilutions:</b> WB: 1:5000-1:50000
<b>Immunogen Catalog Number:</b> EG5655	<b>Full Name:</b> carboxypeptidase M	
	<b>Calculated MW:</b> 51 kDa	
	<b>Observed MW:</b> 51 kDa, 62-70 kDa	

## Applications

<b>Tested Applications:</b> WB, ELISA	<b>Positive Controls:</b> WB : HEK-293 cells, HeLa cells, human adipose tissue, human placenta tissue
<b>Species Specificity:</b> human	

## Background Information

CPM(Carboxypeptidase M), a plasma membrane-bound enzyme, is present in many human organs and differs from other carboxypeptidases that cleave basic C-terminal amino acids(PMID:2394713). CPM is structurally, catalytically and immunologically distinct from other carboxypeptidases, and expressed on cell membranes in a glycosyl-phosphatidylinositol-anchored form and it can be a novel marker and cellular player in lipid uptake and/or metabolism of MAs by promoting foam cell formation (PMID:22157720). This full length protein has a signal peptide with 17 amino acid, a propeptide with 20 amino acid and five glycosylation sites.

## Storage

**Storage:**  
Store at -20°C. Stable for one year after shipment.  
**Storage Buffer:**  
PBS with 0.02% sodium azide and 50% glycerol, pH7.3  
Aliquoting is unnecessary for -20°C storage

For technical support and original validation data for this product please contact:

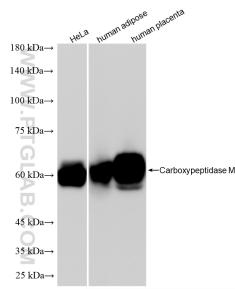
T: 4006900926

E: Proteintech-CN@ptglab.com

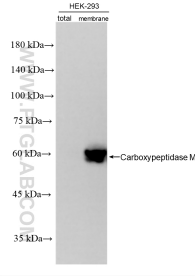
W: ptgcn.com

This product is exclusively available under Proteintech Group brand and is not available to purchase from any other manufacturer.

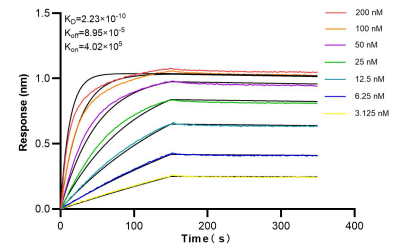
## Selected Validation Data



Various lysates were subjected to SDS PAGE followed by western blot with 87661-1-RR (CBPM antibody) at dilution of 1:10000 incubated at room temperature for 1.5 hours.



Various lysates were subjected to SDS PAGE followed by western blot with 87661-1-RR (CBPM antibody) at dilution of 1:10000 incubated at room temperature for 1.5 hours.



Biolayer interferometry (BLI) kinetic assays of 87661-1-RR against Human Carboxypeptidase M were performed. The affinity constant is 0.223 nM.