

For Research Use Only

Mouse CD224/GGT1 Recombinant monoclonal antibody, PBS Only (Detector)

Catalog Number: 87659-2-PBS



Basic Information

Catalog Number:

87659-2-PBS

Source:

Rabbit

Isotype:

IgG

Immunogen Catalog Number:

EG6301

GenBank Accession Number:

NM_001305992.1

GeneID (NCBI):

14598

UNIPROT ID:

Q60928

Full Name:

gamma-glutamyltransferase 1

Calculated MW:

62 kDa

Purification Method:

Protein A purification

CloneNo.:

253090A12

Applications

Tested Applications:

Sandwich ELISA, Indirect ELISA

Species Specificity:

mouse

Background Information

Storage

Storage:

Store at -80°C.

The product is shipped with ice packs. Upon receipt, store it immediately at -80°C

Storage Buffer:

PBS only, pH7.3

For technical support and original validation data for this product please contact:

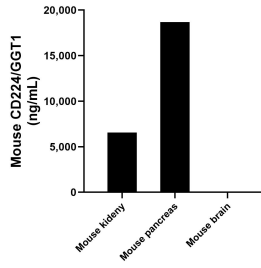
T: 4006900926

E: Proteintech-CN@ptglab.com

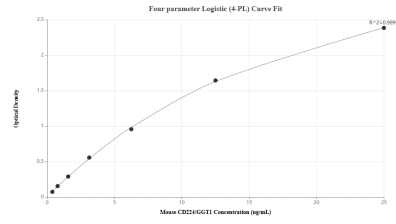
W: ptgcn.com

This product is exclusively available under Proteintech Group brand and is not available to purchase from any other manufacturer.

Selected Validation Data



The mean CD224/GGT1 concentration was determined to be 6,546.25 ng/mL in mouse kidney tissue extract based on a 8.4 mg/mL extract load, 18,675.63 ng/mL in mouse pancreas tissue extract based on a 10.6 mg/mL extract load and 6.92 ng/mL in mouse brain tissue extract based on a 8.3 mg/mL extract load.



Sandwich ELISA standard curve of MP03153-2, Mouse CD224/GGT1 Recombinant Matched Antibody Pair - PBS only. 87659-3-PBS was coated to a plate as the capture antibody and incubated with serial dilutions of standard Eg6301. 87659-2-PBS was HRP conjugated as the detection antibody. Range: 0.39-25 ng/mL