

For Research Use Only

# Mouse GGT1 Recombinant monoclonal antibody, PBS Only (Detector)

Catalog Number:87659-1-PBS



## Basic Information

<b>Catalog Number:</b> 87659-1-PBS	<b>GenBank Accession Number:</b> NM_001305992.1	<b>Purification Method:</b> Protein A purification
<b>Source:</b> Rabbit	<b>GeneID (NCBI):</b> 14598	<b>CloneNo.:</b> 253090C2
<b>Isotype:</b> IgG	<b>UNIPROT ID:</b> Q60928	
<b>Immunogen Catalog Number:</b> EG6301	<b>Full Name:</b> gamma-glutamyltransferase 1	
	<b>Calculated MW:</b> 62 kDa	
	<b>Observed MW:</b> 50-61 kDa	

## Applications

**Tested Applications:**  
WB, Cytometric bead array, Indirect ELISA

**Species Specificity:**  
mouse, rat

## Background Information

GGT1 is a heterodimer composed of light chain and heavy chain, and its active site is located in the light chain. The metabolism of glutathione by GGT1 releases free glutamic acid and dipeptide cysteine-glycine, which can be hydrolyzed into cysteine and glycine by dipeptidase. In the presence of high concentration of dipeptide and some amino acids, it can also catalyze the peptide transfer reaction and transfer  $\gamma$ -glutamyl group to receptor amino acids to form new  $\gamma$ -glutamyl compounds. Participate in cysteine homeostasis, glutathione homeostasis and the transformation of Leukotriene LTC<sub>4</sub> to LTD<sub>4</sub> (PMID:12810527).

## Storage

**Storage:**  
Store at -80°C.  
**The product is shipped with ice packs. Upon receipt, store it immediately at -80°C**

**Storage Buffer:**  
PBS only, pH7.3

For technical support and original validation data for this product please contact:

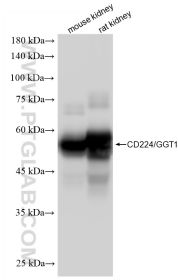
T: 4006900926

E: Proteintech-CN@ptglab.com

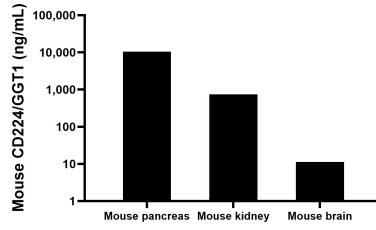
W: ptgcn.com

**This product is exclusively available under Proteintech Group brand and is not available to purchase from any other manufacturer.**

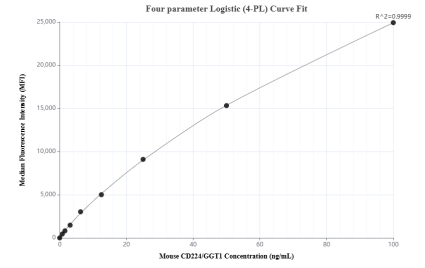
## Selected Validation Data



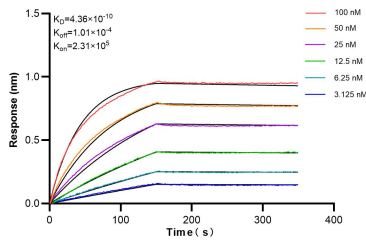
Various lysates were subjected to SDS PAGE followed by western blot with 87659-1-RR (CD224/IGT1 antibody) at dilution of 1:10000 incubated at room temperature for 1.5 hours. This data was developed using the same antibody clone with 87659-1-PBS in a different storage buffer formulation.



The mean CD224/IGT1 concentration was determined to be 10438.8 ng/mL in mouse pancreas tissue extract based on a 10.6 mg/mL extract load, 747.6 ng/mL in mouse kidney tissue extract based on a 7.8 mg/mL extract load, 11.3 ng/mL in mouse brain tissue extract based on a 2.2 mg/mL extract load.



Cytometric bead array standard curve of MP03153-1, MOUSE CD224/IGT1 Recombinant Matched Antibody Pair, PBS Only. Capture antibody: 87659-3-PBS. Detection antibody: 87659-1-PBS. Standard: Eg6301. Range: 0.781-100 ng/mL



Bi-layer interferometry (BLI) kinetic assays of 87659-1-RR against Mouse GGT1 were performed. The affinity constant is 0.436 nM.