

For Research Use Only

ERBB2IP Recombinant monoclonal antibody, PBS Only

Catalog Number:87639-1-PBS



Basic Information

Catalog Number: 87639-1-PBS	GenBank Accession Number: NM_001253697.1	Purification Method: Protein A purification
Source: Rabbit	GeneID (NCBI): 55914	CloneNo.: 253133B5
Isotype: IgG	UNIPROT ID: Q96RT1-1	
Immunogen Catalog Number: EG5491	Full Name: erbb2 interacting protein	
	Calculated MW: 158 kDa	
	Observed MW: 150-180 kDa	

Applications

Tested Applications:
WB, Indirect ELISA

Species Specificity:
human

Background Information

ERBB2IP is a cytoplasmic protein that contains leucine-rich repeats (LRR) and PSD95/Dlg1/zo-1 (PDZ) domain (thus named a LAP protein). ERBB2IP interacts, via its single PDZ domain, specifically with ErbB2, but not with ErbB3, ErbB4, or EGFR. It is colocalized with ErbB2 at the basolateral membranes of epithelial cells. In addition, ERBB2IP also interacts with PSD - 95, Lano and with three p120 - related catenins, eBPAG1 and the β 4 subunit of the α 6 β 4 integrin, two major components of hemidesmosomes. The molecular weight of ERBB2IP was predicted 150-180 kDa by Western Blot.(PMID: 25288731,PMID: 24252174,PMID: 19289088)

Storage

Storage:
Store at -80°C.
The product is shipped with ice packs. Upon receipt, store it immediately at -80°C

Storage Buffer:
PBS only, pH7.3

For technical support and original validation data for this product please contact:

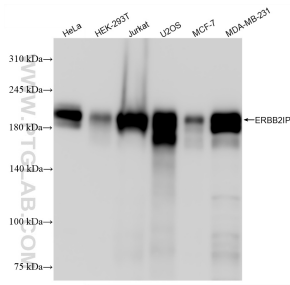
T: 4006900926

E: Proteintech-CN@ptglab.com

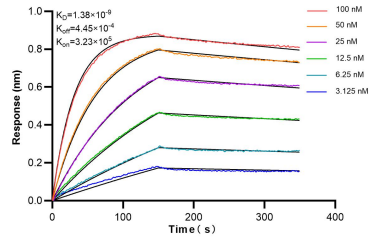
W: ptgcn.com

This product is exclusively available under Proteintech Group brand and is not available to purchase from any other manufacturer.

Selected Validation Data



Various lysates were subjected to SDS PAGE followed by western blot with 87639-1-RR (ERBB2IP antibody) at dilution of 1:5000 incubated at room temperature for 1.5 hours. This data was developed using the same antibody clone with 87639-1-PBS in a different storage buffer formulation.



Biolayer interferometry (BLI) kinetic assays of 85994-1-RR against Human ERBB2IP were performed. The affinity constant is 1.36 nM.