

For Research Use Only

# Mouse LyVE-1 Recombinant monoclonal antibody, PBS Only (Capture)

Catalog Number: 87635-3-PBS



## Basic Information

<b>Catalog Number:</b> 87635-3-PBS	<b>GenBank Accession Number:</b> NM_053247.4	<b>Purification Method:</b> Protein A purification
<b>Source:</b> Rabbit	<b>GeneID (NCBI):</b> 114332	<b>CloneNo.:</b> 252928B2
<b>Isotype:</b> IgG	<b>UNIPROT ID:</b> Q8BHCO	
<b>Immunogen Catalog Number:</b> EG6367	<b>Full Name:</b> lymphatic vessel endothelial hyaluronan receptor 1	
	<b>Calculated MW:</b> 35 kDa	

## Applications

**Tested Applications:**  
Cytometric bead array, Indirect ELISA

**Species Specificity:**  
mouse

## Background Information

### Storage

**Storage:**  
Store at -80°C.  
**The product is shipped with ice packs. Upon receipt, store it immediately at -80°C**

**Storage Buffer:**  
PBS only, pH7.3

For technical support and original validation data for this product please contact:

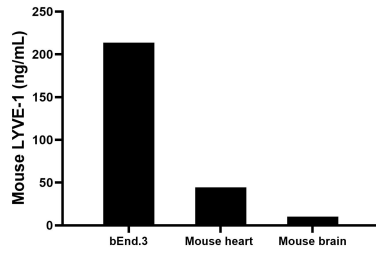
T: 4006900926

E: [Proteintech-CN@ptglab.com](mailto:Proteintech-CN@ptglab.com)

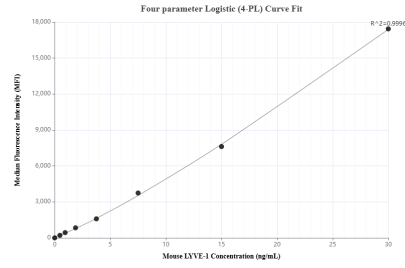
W: [ptgcn.com](http://ptgcn.com)

**This product is exclusively available under Proteintech Group brand and is not available to purchase from any other manufacturer.**

## Selected Validation Data



The mean LYVE-1 concentration was determined to be 213.6 ng/mL in bEnd.3 cell extract based on a 1.2 mg/mL extract load, 44.3 ng/mL in mouse heart tissue extract based on a 5.4 mg/mL extract load, 10.4 ng/mL in mouse brain tissue extract based on a 2.2 mg/mL extract load.



Cytometric bead array standard curve of MP03135-1, MOUSE LYVE-1 Recombinant Matched Antibody Pair, PBS Only. Capture antibody: 87635-3-PBS. Detection antibody: 87635-2-PBS. Standard: Eg6367. Range: 0.469-30 ng/mL.