

For Research Use Only

Mouse LyVE-1 Recombinant monoclonal antibody, PBS Only (Detector)

Catalog Number: 87635-2-PBS



Basic Information

Catalog Number:

87635-2-PBS

Source:

Rabbit

Isotype:

IgG

Immunogen Catalog Number:

EG6367

GenBank Accession Number:

NM_053247.4

GeneID (NCBI):

114332

UNIPROT ID:

Q8BHCO

Full Name:

Lymphatic vessel endothelial hyaluronan receptor 1

Calculated MW:

35 kDa

Purification Method:

Protein A purification

CloneNo.:

252928H2

Applications

Tested Applications:

Cytometric bead array, Indirect ELISA

Species Specificity:

mouse

Background Information

Storage

Storage:

Store at -80°C.

The product is shipped with ice packs. Upon receipt, store it immediately at -80°C

Storage Buffer:

PBS only, pH7.3

For technical support and original validation data for this product please contact:

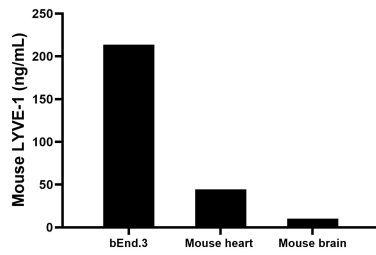
T: 4006900926

E: Proteintech-CN@ptglab.com

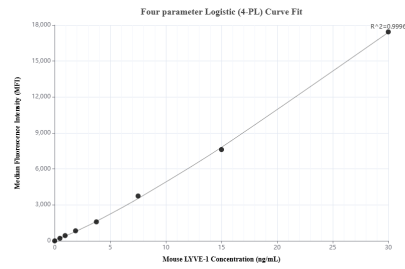
W: ptgcn.com

This product is exclusively available under Proteintech Group brand and is not available to purchase from any other manufacturer.

Selected Validation Data



The mean LYVE-1 concentration was determined to be 213.6 ng/mL in bEnd.3 cell extract based on a 1.2 mg/mL extract load, 44.3 ng/mL in mouse heart tissue extract based on a 5.4 mg/mL extract load, 10.4 ng/mL in mouse brain tissue extract based on a 2.2 mg/mL extract load.



Cytometric bead array standard curve of MP03135-1, MOUSE LYVE-1 Recombinant Matched Antibody Pair, PBS Only. Capture antibody: 87635-3-PBS. Detection antibody: 87635-2-PBS. Standard: Eg6367. Range: 0.469-30 ng/mL.