

For Research Use Only

PEL1 Recombinant monoclonal antibody, PBS Only (Detector)

Catalog Number:87624-1-PBS



Basic Information

| | | |
|--|---|---|
| Catalog Number: 87624-1-PBS | GenBank Accession Number: BC011419 | Purification Method: Protein A purification |
| Source: Rabbit | GeneID (NCBI): 57162 | CloneNo.: 252984F9 |
| Isotype: IgG | UNIPROT ID: Q96FA3 | |
| Immunogen Catalog Number: AG2683 | Full Name: pellino homolog 1 (Drosophila) | |
| | Calculated MW: 418 aa, 46 kDa | |

Applications

Tested Applications:
Cytometric bead array, Indirect ELISA

Species Specificity:
human

Background Information

Storage

Storage:
Store at -80°C.
The product is shipped with ice packs. Upon receipt, store it immediately at -80°C

Storage Buffer:
PBS only, pH7.3

For technical support and original validation data for this product please contact:

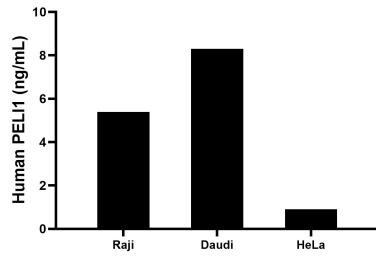
T: 4006900926

E: Proteintech-CN@ptglab.com

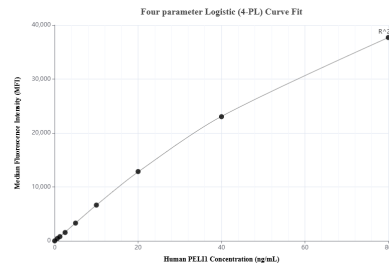
W: ptgcn.com

This product is exclusively available under Proteintech Group brand and is not available to purchase from any other manufacturer.

Selected Validation Data



The mean PELI1 concentration was determined to be 5.4 ng/mL in Raji cell extract based on a 1.2 mg/mL extract load, 8.3 ng/mL in Daudi cell extract based on a 1.2 mg/mL extract load, 0.9 ng/mL in HeLa cell extract based on a 1.2 mg/mL extract load.



Cytometric bead array standard curve of MP03109-1, PELI1 Recombinant Matched Antibody Pair, PBS Only. Capture antibody: 87624-4-PBS. Detection antibody: 87624-1-PBS. Standard: Ag2683. Range: 0.625-80 ng/mL.