

For Research Use Only

MAP1A Recombinant monoclonal antibody

Catalog Number:87623-1-RR



Basic Information

Catalog Number:

87623-1-RR

Source:

Rabbit

Isotype:

IgG

GenBank Accession Number:

NM_002373

GeneID (NCBI):

4130

UNIPROT ID:

P78559

Full Name:

microtubule-associated protein 1A

Calculated MW:

305 kDa

Observed MW:

26-28 kDa

Purification Method:

Protein A purification

CloneNo.:

252699A2

Recommended Dilutions:

WB: 1:5000-1:50000

Applications

Tested Applications:

WB, ELISA

Species Specificity:

human, mouse, rat

Positive Controls:

WB : mouse brain tissue, rat brain tissue

Background Information

The assembly of microtubules, an essential step in neurogenesis, is modulated by the family of microtubule-associated proteins (MAPs). These proteins have been divided into 2 main groups by molecular mass, high molecular weight MAPs, which include MAP1A, MAP1B, and MAP2, and another group of intermediate-sized proteins, which include the abundant tau MAPs. MAP1A is the largest brain MAP and is expressed prominently in dendrites and to a lesser extent in cell bodies and axons. This protein is involved in differentiation of axons and dendrites as well as maintenance of the microtubule cytoskeleton in mature neurons. This antibody recognizes MAP1 light chain LC2.

Storage

Storage:

Store at -20°C. Stable for one year after shipment.

Storage Buffer:

PBS with 0.02% sodium azide and 50% glycerol, pH7.3

Aliquoting is unnecessary for -20°C storage

For technical support and original validation data for this product please contact:

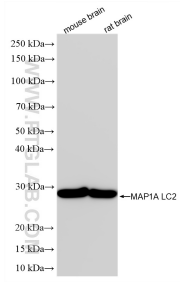
T: 4006900926

E: Proteintech-CN@ptglab.com

W: ptgcn.com

This product is exclusively available under Proteintech Group brand and is not available to purchase from any other manufacturer.

Selected Validation Data



Various lysates were subjected to SDS PAGE followed by western blot with 87623-1-RR (MAP1A antibody) at dilution of 1:10000 incubated at room temperature for 1.5 hours.