

For Research Use Only

# MED13L Recombinant monoclonal antibody

Catalog Number:87618-1-RR



## Basic Information

Catalog Number:

87618-1-RR

Source:

Rabbit

Isotype:

IgG

GenBank Accession Number:

NM\_015335

GeneID (NCBI):

23389

UNIPROT ID:

Q71F56

Full Name:

mediator complex subunit 13-like

Calculated MW:

243 kDa

Observed MW:

270 kDa

Purification Method:

Protein A purification

CloneNo.:

252238G12

Recommended Dilutions:

WB: 1:500-1:1000

## Applications

Tested Applications:

WB, ELISA

Species Specificity:

human

Positive Controls:

WB : K-562 cells, A549 cells, HeLa cells

## Background Information

MED13L, also named as KIAA1025, PROSIT240, THRAP2 and TRAP240L, belongs to the Mediator complex subunit 13 family. It is a component of the Mediator complex, a coactivator involved in the regulated transcription of nearly all RNA polymerase II-dependent genes. MED13L is a mediator functions as a bridge to convey information from gene-specific regulatory proteins to the basal RNA polymerase II transcription machinery. MED13L is recruited to promoters by direct interactions with regulatory proteins and serves as a scaffold for the assembly of a functional preinitiation complex with RNA polymerase II and the general transcription factors. This subunit may specifically regulate transcription of targets of the Wnt signaling pathway and SHH signaling pathway.

## Storage

Storage:

Store at -20°C. Stable for one year after shipment.

Storage Buffer:

PBS with 0.02% sodium azide and 50% glycerol, pH7.3

Aliquoting is unnecessary for -20°C storage

For technical support and original validation data for this product please contact:

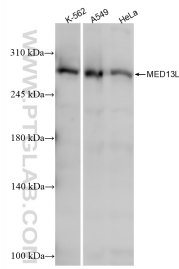
T: 4006900926

E: [Proteintech-CN@ptglab.com](mailto:Proteintech-CN@ptglab.com)

W: [ptgcn.com](http://ptgcn.com)

**This product is exclusively available under Proteintech Group brand and is not available to purchase from any other manufacturer.**

## Selected Validation Data



Various lysates were subjected to SDS PAGE followed by western blot with 87618-1-RR (MED13L antibody) at dilution of 1:500 incubated at room temperature for 1.5 hours.