

For Research Use Only

CNTN1 Recombinant monoclonal antibody, PBS Only (Detector)

Catalog Number:87612-1-PBS



Basic Information

Catalog Number: 87612-1-PBS	GenBank Accession Number: NM_001843.3	Purification Method: Protein A purification
Source: Rabbit	GeneID (NCBI): 1272	CloneNo.: 252906D4
Isotype: IgG	UNIPROT ID: Q12860	
Immunogen Catalog Number: EG6555	Full Name: contactin 1	
	Calculated MW: 113 kDa	
	Observed MW: 135 kDa	

Applications

Tested Applications:
WB, IP, Sandwich ELISA, Indirect ELISA

Species Specificity:
human, mouse, rat

Background Information

Contactin-1 (CNTN1), also known as Glycoprotein gp135 or Neural cell surface protein F3, is a neuronal cell adhesion molecule of the immunoglobulin superfamily (PMID: 3049624). It consists of six Ig domains, four fibronectin-like motifs, and a glycosylphosphatidylinositol (GPI)-moiety. Expressed by the central and peripheral neurons, CNTN1 contributes to the formation and function of neuronal connections. It plays a role in axon extension and formation of septate-like junctions between axons and myelinating glial cells (PMID: 23724143). In addition, acting as a ligand for Notch, CNTN1 initiates a NOTCH/DTX1 signaling pathway that promotes oligodendrocyte maturation and myelination (PMID: 14567914).

Storage

Storage:
Store at -80°C.
The product is shipped with ice packs. Upon receipt, store it immediately at -80°C

Storage Buffer:
PBS only, pH7.3

For technical support and original validation data for this product please contact:

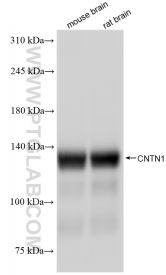
T: 4006900926

E: Proteintech-CN@ptglab.com

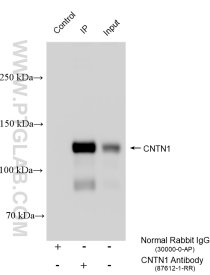
W: ptgcn.com

This product is exclusively available under Proteintech Group brand and is not available to purchase from any other manufacturer.

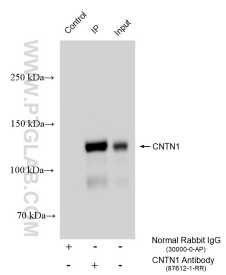
Selected Validation Data



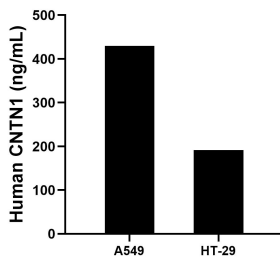
Various lysates were subjected to SDS PAGE followed by western blot with 87612-1-RR (CNTN1 antibody) at dilution of 1:20000 incubated at room temperature for 1.5 hours. This data was developed using the same antibody clone with 87612-1-PBS in a different storage buffer formulation.



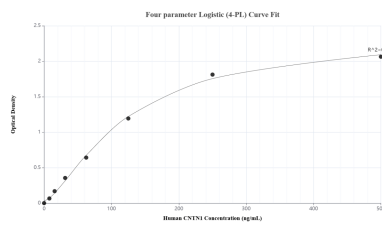
IP result of anti-CNTN1 (IP:87612-1-RR, 4 ug; Detection: 87612-1-RR 1:5000) with mouse brain tissue lysate 1680 ug. This data was developed using the same antibody clone with 87612-1-PBS in a different storage buffer formulation.



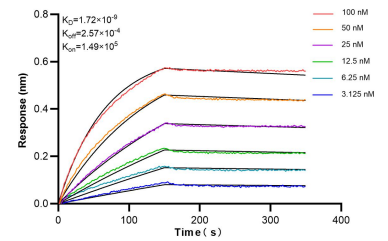
IP result of anti-CNTN1 (IP:87612-1-RR, 4 ug; Detection: 87612-1-RR 1:5000) with rat brain tissue lysate 1720 ug. This data was developed using the same antibody clone with 87612-1-PBS in a different storage buffer formulation.



The mean CNTN1 concentration was determined to be 429.57 ng/mL in A549 cell extract based on a 1.20 mg/mL extract load and 191.70 ng/mL in HT-29 cell extract based on a 1.10 mg/mL extract load.



Sandwich ELISA standard curve of MP03227-1, Human CNTN1 Recombinant Matched Antibody Pair - PBS only. 87612-2-PBS was coated to a plate as the capture antibody and incubated with serial dilutions of standard Eg6555. 87612-1-PBS was HRP conjugated as the detection antibody. Range: 7.81-500 ng/mL.



Bi-layer interferometry (BLI) kinetic assays of 87612-1-RR against Human CNTN1 were performed. The affinity constant is 1.72 nM.