

For Research Use Only

EN1 Recombinant monoclonal antibody, PBS Only (Capture)

Catalog Number:87609-2-PBS



Basic Information

Catalog Number:

87609-2-PBS

Source:

Rabbit

Isotype:

IgG

Immunogen Catalog Number:

AG26688

GenBank Accession Number:

NM_001426

GeneID (NCBI):

2019

UNIPROT ID:

Q05925

Full Name:

engrailed homeobox 1

Calculated MW:

40 kDa

Purification Method:

Protein A purification

CloneNo.:

252831H2

Applications

Tested Applications:

Sandwich ELISA, Indirect ELISA

Species Specificity:

human

Background Information

Storage

Storage:

Store at -80°C.

The product is shipped with ice packs. Upon receipt, store it immediately at -80°C

Storage Buffer:

PBS only, pH7.3

For technical support and original validation data for this product please contact:

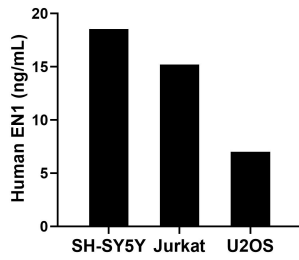
T: 4006900926

E: Proteintech-CN@ptglab.com

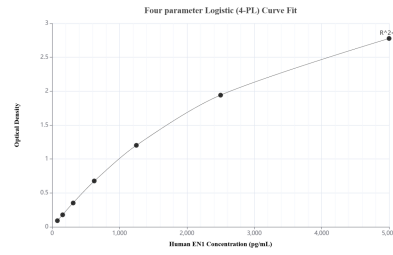
W: ptgcn.com

This product is exclusively available under Proteintech Group brand and is not available to purchase from any other manufacturer.

Selected Validation Data



The mean EN1 concentration was determined to be 18.5 ng/mL in SH-SY5Y cell extract based on a 1.2 mg/mL extract load, 15.2 ng/mL in Jurkat cell extract based on a 1.2 mg/mL extract load and 7.0 ng/mL in U2OS cell extract based on a 1.2 mg/mL extract load.



Sandwich ELISA standard curve of MP03088-1, Human EN1 Recombinant Matched Antibody Pair - PBS only. 87609-2-PBS was coated to a plate as the capture antibody and incubated with serial dilutions of standard Ag26688. 87609-1-PBS was HRP conjugated as the detection antibody. Range: 78.1-5000 pg/mL.