

For Research Use Only

# CDHR5 Recombinant monoclonal antibody, PBS Only (Detector)

Catalog Number: 87608-1-PBS



## Basic Information

Catalog Number:

87608-1-PBS

Source:

Rabbit

Isotype:

IgG

Immunogen Catalog Number:

EG5775

GenBank Accession Number:

NM\_021924.5

GeneID (NCBI):

53841

UNIPROT ID:

Q9HBB8

Full Name:

mucin-like protocadherin

Calculated MW:

88 kDa

Purification Method:

Protein A purification

CloneNo.:

252533F4

## Applications

Tested Applications:

Sandwich ELISA, Indirect ELISA

Species Specificity:

human

## Background Information

### Storage

Storage:

Store at -80°C.

The product is shipped with ice packs. Upon receipt, store it immediately at -80°C

Storage Buffer:

PBS only, pH7.3

For technical support and original validation data for this product please contact:

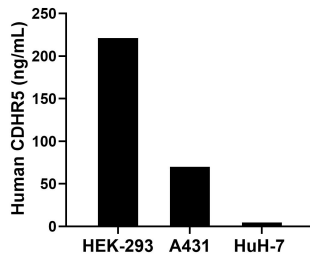
T: 4006900926

E: [Proteintech-CN@ptglab.com](mailto:Proteintech-CN@ptglab.com)

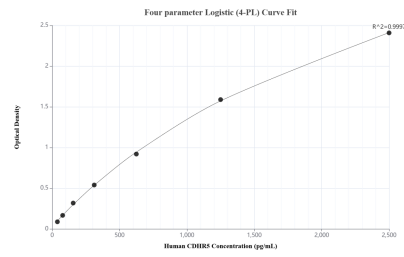
W: [ptgcn.com](http://ptgcn.com)

This product is exclusively available under Proteintech Group brand and is not available to purchase from any other manufacturer.

## Selected Validation Data



The mean CDHR5 concentration was determined to be 220.9 ng/mL in HEK-293 cell extract based on a 1.2 mg/mL extract load, 69.7 ng/mL in A431 cell extract based on a 1.2 mg/mL extract load and 4.5 ng/mL in HuH-7 cell extract based on a 1.2 mg/mL extract load.



Sandwich ELISA standard curve of MP03089-1, Human CDHR5 Recombinant Matched Antibody Pair - PBS only. 87608-2-PBS was coated to a plate as the capture antibody and incubated with serial dilutions of standard Eg5775. 87608-1-PBS was HRP conjugated as the detection antibody. Range: 39.1-2500 pg/mL.