

For Research Use Only

# SF4 Recombinant monoclonal antibody

Catalog Number: 87600-1-RR



## Basic Information

<b>Catalog Number:</b> 87600-1-RR	<b>GenBank Accession Number:</b> BC002986	<b>Purification Method:</b> Protein A purification
<b>Source:</b> Rabbit	<b>GeneID (NCBI):</b> 57794	<b>CloneNo.:</b> 252925A4
<b>Isotype:</b> IgG	<b>UNIPROT ID:</b> Q8IWZ8	<b>Recommended Dilutions:</b> WB: 1:5000-1:50000 IF/ICC: 1:50-1:500
<b>Immunogen Catalog Number:</b> AG8006	<b>Full Name:</b> splicing factor 4	
	<b>Calculated MW:</b> 72 kDa	
	<b>Observed MW:</b> 72-75 kDa	

## Applications

<b>Tested Applications:</b> WB, IF/ICC, ELISA	<b>Positive Controls:</b> WB : U2OS cells, mouse testis tissue, rat testis tissue IF/ICC : HepG2 cells,
<b>Species Specificity:</b> human, mouse, rat	

## Background Information

SF4 (Splicing factor 4), also known as SUGP1 (SURP and G-patch domain-containing protein 1) was first identified as a putative splicing factor based on domain composition analysis. SUGP1 protein is predicted to contain two SURP motifs, domains of alternative splicing regulators thought to be involved in RNA binding, as well as a G-patch domain, a region of six highly conserved glycine residues commonly found in eukaryotic RNA-processing proteins (PMID: 27206982). Research has shown that SUGP1 is involved in the regulation of cholesterol metabolism (PMID: 31474574).

## Storage

**Storage:**  
Store at -20°C. Stable for one year after shipment.  
**Storage Buffer:**  
PBS with 0.02% sodium azide and 50% glycerol, pH7.3  
Aliquoting is unnecessary for -20°C storage

For technical support and original validation data for this product please contact:

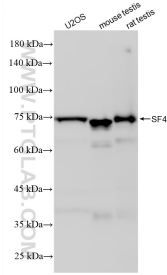
T: 4006900926

E: [Proteintech-CN@ptglab.com](mailto:Proteintech-CN@ptglab.com)

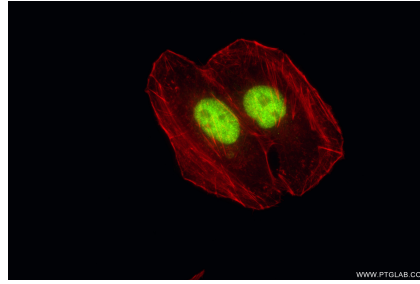
W: [ptgcn.com](http://ptgcn.com)

**This product is exclusively available under Proteintech Group brand and is not available to purchase from any other manufacturer.**

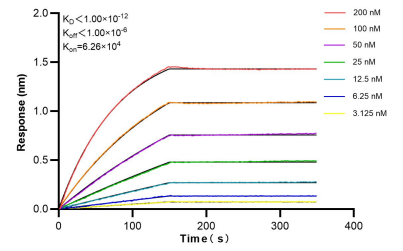
## Selected Validation Data



Various lysates were subjected to SDS PAGE followed by western blot with 87600-1-RR (SF4 antibody) at dilution of 1:10000 incubated at room temperature for 1.5 hours.



Immunofluorescent analysis of (4% PFA) fixed HepG2 cells using SF4 antibody (87600-1-RR, Clone: 252925A4) at dilution of 1:200 and CoraLite® 488-Conjugated Goat Anti-Rabbit IgG(H+L) (SA00013-2), CL594-Phalloidin (red).



Bilayer interferometry (BLI) kinetic assays of 87600-1-RR against Human SF4 were performed. The affinity constant is below 1 pM.